

Temporary Cradle

Building Maintenance Units



www.ademsan.net


Ademsan
Machinery

ABOUT US

4



AST-05
SERIES ON
PERSON
WORKING
PLATFORM

6



AST-10
SERIES TWO
PERSON HOISTED
WORKING
PLATFORM

8



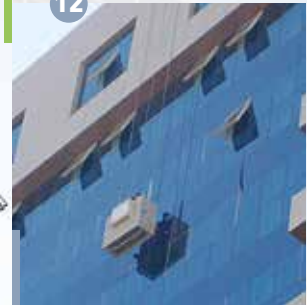
AST-10-01
SERIES TWO
PERSON
HOISTED
WORKING
PLATFORM

10



AST-12
SERIES TWO
PERSON
WORKING
PLATFORM

12



AST-30
SERIES MONRAIL
FAÇADE CLEANING
SYSTEM

24



AST-35
SERIES CLIMBING
MONORAIL FAÇADE
CLEANING SYSTEM

28



AST-40
SERIES
FAÇADE
CLEANING
SYSTEM

30



AST-45
SERIES FAÇADE
CLEANING SYSTEM

34



AST-50
SERIES
FAÇADE
CLEANING
SYSTEM

38



AST-12-01
SERIES OPENABLE
SCISSORED
(PANTOGRAPH)
TYPE, DOUBLE
PERSON WORKING
PLATFORM

14



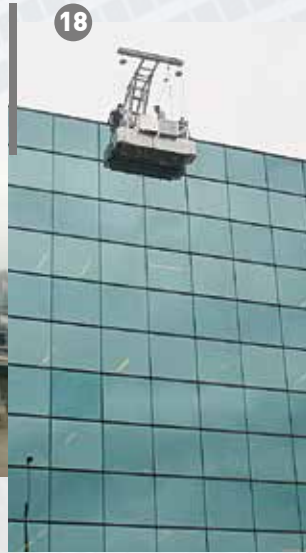
AST-15-01
SERIES
COUNTERWEIGHT
SUSPENSION
SYSTEM

16



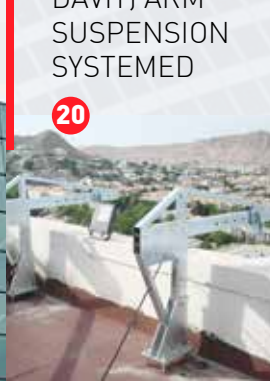
AST-15-02
SERIES
COUNTERWEIGHT
SUSPENSION
SYSTEM

18



AST-20
SERIES
ANCHORAGE
(LOW RIDE
DAVIT) ARM
SUSPENSION
SYSTEMED

20



AST-25
SERIES
DAVIT ARM
SUSPENSION
SYSTEM

22



AST-60
SERIES FAÇADE
CLEANING SYSTEM

42



AST-70
SERIES FAÇADE
CLEANING
SYSTEM

44



ELECTRICAL
SUSPENDED
SCAFFOLDING
SYSTEM

50



SPEACIAL
DESIGN
SUSPENDED
SCAFFOLD

56



RESTRAINT
SOCKETS
SYSYEMS

58





Our company, one of the leading companies of Building Maintenance Units (BMU), Light construction machinery and equipments is continuing its activities in its Ankara factory located in the area of Ostim Organizational Industrial Zone Istanbul, sales and service departments continues its activities at Istanbul Ikitelli Organizational Industrial zone.

Together with 20 dealers in Turkey and overseas 15 distributors, manufactures products oriented to construction sector.

With its experienced and extended staff; provides project design, manufacturing, assembly and maintenance services.

Machine designs belongs to itself, during the years of 2013 and 2014 has successfully completed the research and development program of developing façade cleaning systems /building maintenance units together with TUBITAK.

Cooperation with Hacettepe University

for the development and analysis of the products is active.

Ademsan Machinery provides sales, installation and technical support services for Building Maintenance Units, Special Design Platforms and Rebar Cutting & Rebar Bending Machines.

Ademsan Machinery offers products to customers use that undergo rigorous testing and multidisciplinary quality control from the start of raw material to end.

Along with standard machines, in accordance with customer requests different assortments and custom made platforms are manufactured.

Ademsan Machinery provides and serves its customers with its; project department of engineers, professional technical staff, continuous development and with wide range of machinery.

With its quality focused operation has signed to major project in Turkey and overseas.

About Us

Production Areas

- ▶ Building Maintenance Units
- ▶ Facade Cleaning Machines
- ▶ Electrical Suspended Scaffolding
- ▶ Special Design/ Custom Made
- ▶ Rebar Cutting Machines
- ▶ Rebar Bending Machines
- ▶ Resistance Bending Machine



AST-5

SERIES ONE PERSON WORKING PLATFORM

- One person platform used in small and narrow areas.
- Used together with counterweigh, davit arm, monorails and other systems.
- One engined /hoisted and wire rope realered system platform.
- Preferred at 100x80 cm narrow façades.
- One piece of safety wire rope is upon.
- 120 kg load capacity.
- Security wire rope and safety lock (security lock) allows safe working environment.
- Lower limit and upper limit switch systems prevents operator errors.
- Manufacturing and assembly is in accordance within EN 1808 standards and norms.





Polat Hotel, Erzurum - Turkey



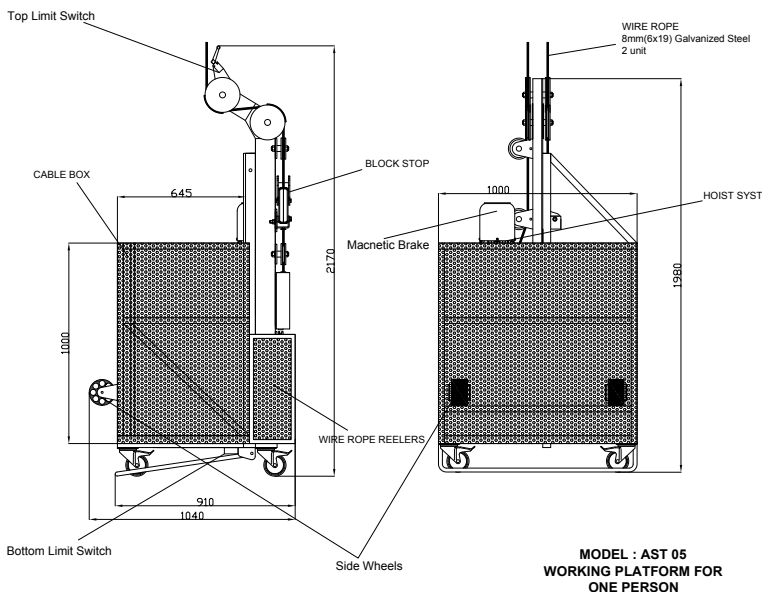
Social Security Institution, Istanbul - Turkey



Odak Construction, Istanbul - Turkey



Dalan Chemistry, Istanbul - Turkey



FEATURES	
Used with	AST 15, AST 20, AST 25, AST 30, AST 35 systems
Power	1,5 kW
Wire rope	2 Pieces 8 mm Wire Rope
Voltage	380 V
Control	Cable
Vertical Movement	7 m / min 1 Unit 1,1 kw
Horizontal Movement	Manual & Engined / Hoist
Platform Weight	200 kg (differs in accordance with building height).
Working Capacity	120 Kg



AST-10

SERIES TWO PERSON HOISTED WORKING PLATFORM

- Two Person double hoisted platform.
- Used together with counterweigh, davit arm, monorails and other terrace systems.
- Double hoisted and double wire rope reeled platform.
- With 200x60x100 cm dimensions used within all general purpose works.
- 2 Pieces of carrying wire ropes and 2 units of security wire ropes are available.
- 240 kg load capacity (custom made and upon request load capacity can vary).
- Security wire ropes and safety locks allows safe working environment.
- Over load sensor, Lower collision bar, Upper and Lower limit switches prevents operator errors.
- Manufacturing and assembly is in accordance within EN 1808 standards and norms



Esenler Hospital, Istanbul - Turkey



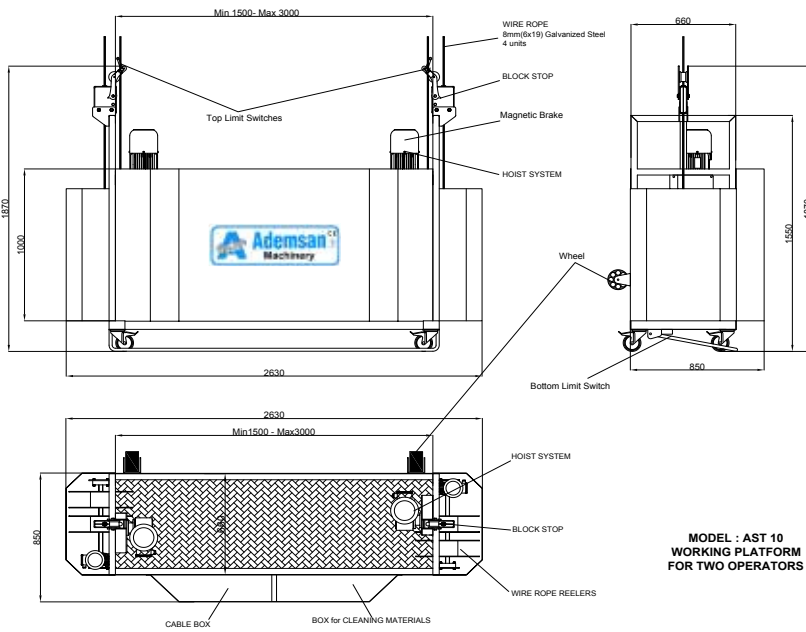
Turkcell Kartal Plaza, İstanbul - Turkey



Tüze Tower, Bursa - Tukey



Black Sea Trade Center, Batum



FEATURES	
Used with	AST 15, AST 20, AST 25, AST 30, AST 35 systems
Power	3 kW
Wire rope	4 Pieces 8 mm Wire Rope
Voltage	380 V
Control	Cable
Vertical Movement	7 m /min 2 Units 2,2 kw
Horizontal Movement	Manual & Hoisted
Platform Weight	300 kg ... (differs in accordance with building height)
Working Capacity	240 Kg



AST-10-01

SERIES TWO PERSON HOISTED WORKING PLATFORM

- Constructed upon AST 10 Two Person Cardle.
- Used when in reach for the verges / canopy indents.
- Engined system 1m outward openeable /1 m inclines
- Used with Counterweight.Davit Arm, Monorail and terrace units .
- Platfrom with double hoist and wire rope reeler.
- With 200x60x100 cm dimensions used within all general purpose works.
- 2 Pieces of carrying wire ropes and 2 units of security wire ropes are available.
- 240 kg lod capacity (custom made and upon request load capacity can vary).
- Security wire ropes and safety locks allows safe working environment.
- Over load sensor,Lower collision bar,Upper and Lower limit switches prevents operator errors.
- Manufacturing and assembly is in accordance within EN 1808 standards and norms



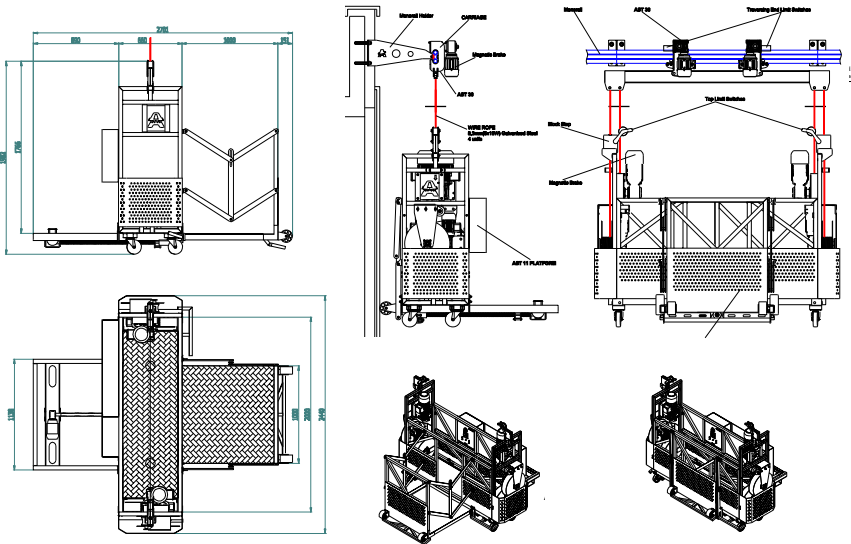
Sea Tower, Batum



Aşkabat AVM, Türkmenistan



Acibadem University Hospital, İstanbul - Turkey



FEATURES

Used with	AST 15, AST 20, AST 25, AST 30, AST 35 systems
Power	3 kW
Wire rope	4 Pieces 8 mm Wire Rope
Voltage	380 V
Control	Cable
Vertical Movement	7 m /min 2 Units, 2,2 kw
Horizontal Movement	Manual & Hoisted
Outward Opening Distance	1 m outward /forward openable.
Platform Weight	300 kg ... (differs in accordance with building height)
Working Capacity	240 Kg



AST-12

SERIES TWO PERSON WORKING PLATFORM

- Two person working platform , no lift system upon it.
- Used only with terrace units .
- With 200x60x100 cm dimensions used within all general purpose works.
- System is made up of aluminum material.
- 2 Pieces of carrying wire ropes and 2 units of security wire ropes are available.
- 240 kg load capacity (custom made and upon request load capacity can vary).
- Security wire ropes and safety locks allows safe working environment.
- Over load sensor, Lower collision bar, Upper and Lower limit switches prevents operator errors.
- Manufacturing and assembly is in accordance within EN 1808 standards and norms



Al Siniyar Tower, Qatar



Fakhroo Tower, Bahrein



Kanoo Tower, Bahrein



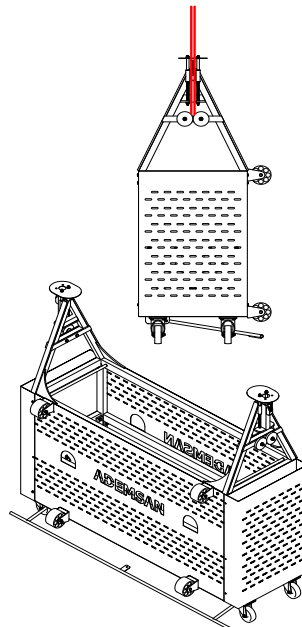
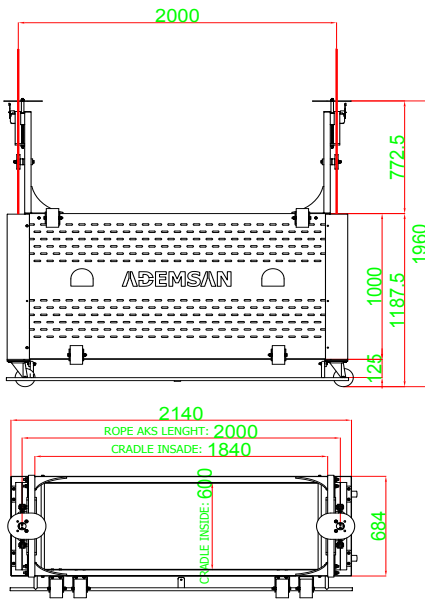
Mid Cotracting, Qatar



What Mall Khartum, Sudan



Yolbulan Metal Ataşehir, Istanbul - Turkey



FEATURES

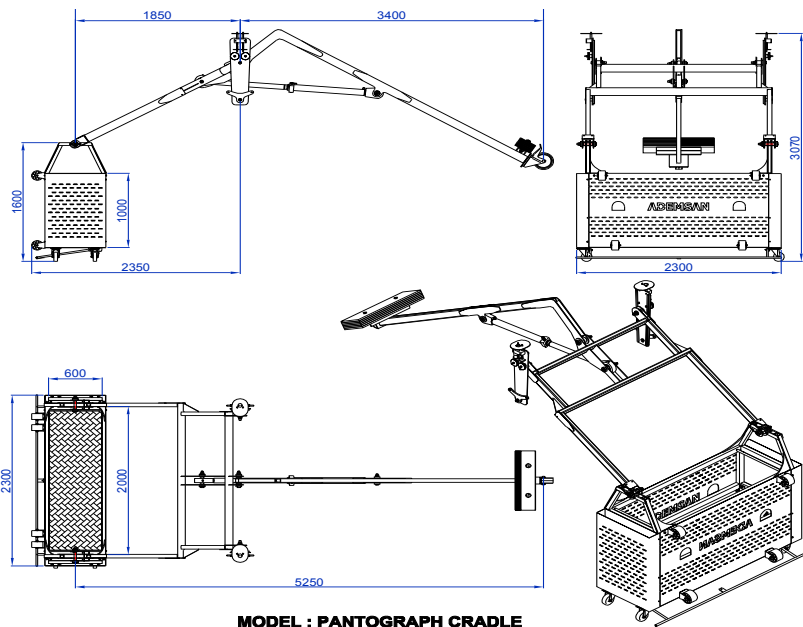
Used with	AST 40, AST 45, AST 50, AST 60, AST 70 systems.
Wire rope	4 Pieces 8 mm Wire Rope
Voltage	24 V
Control	E-Cable / Cable
Vertical Movement	8 m /min (in accordance with main machine)
Horizontal Movement	4 m /min (in accordance with main machine)
Platform Weight	150 kg (differs in accordance with building height)
Working Capacity	240 Kg

AST-12-01

SERIES OPENABLE SCISSORED (PANTOGRAPH) TYPE, DOUBLE PERSON WORKING PLATFORM



- Platform used when necessary to reach under the indents/ under eaves.
- Optionally scissors type forward openable 1,2,3 m platform.
- Movement of opening is performed within the platform via manual hydraulic piston.
- Two person working platform , no lift system upon it.
- Used only with terrace units .
- With 200x60x100 cm dimensions used within all general purpose works.
- Main grider/body system is made up of steel , platform up from aluminium material.
- 2 Pieces of carrying wire ropes and 2 units of security wire ropes are available.
- 240 kg load capacity (custom made and upon request load capacity can vary).
- Security wire ropes and safety locks allows safe working environment.
- Over load sensor, Lower collision bar, Upper and Lower limit switches prevents operator errors.
- Manufacturing and assembly is in accordance within EN 1808 standards and norms



FEATURES

Used with	AST 40, AST 45, AST 50, AST 60, AST 70 systems
Wire Rope	4 Pieces 8 mm Wire Rope
Voltage	24 V
Control	E-Cable / Cable
Vertical Movement	8 m / min (in accordance with main machine)
Horizontal Movement	4 m / min (in accordance with main machine)
Outward Opening Distance	1,2,3 m outward /forward openable (optional...as per request)
Open Movement	Manual Powered Hydraulic Piston
Platform Weight	150 kg ... (differs in accordance with building height)
Working Capacity	240 Kg

AST-15-01

SERIES COUNTERWEIGHT SUSPENSION SYSTEM



- Wheeled suspension system composed of one suspension arm, which passes over the parapet to the façade, and a counterweight arm where weights are placed on the terrace floor of the building.
- Counterweight suspension system is moved manually by hand on the terrace level / floor.
- 4 wheels founded underneath the system can be locked upon the desired point.
- For this system to work effectively; floor surface should be flat and have the standard and quality to bear the systems' weight.
- Upon request the system is manufactured to have either a one person working platform or two person
- Counterweights vary according to suspension arms' and counterweight arms' dimensions
- Suspension arm types vary according to height and dimension of the buildings terrace dimensions and parapet height.
- Manufacturing and assembly is in accordance within EN 1808 standards and norms

FEATURES	
Platform	One Person and Two Person Cradle AST 05-AST 10
Suspension Arm Dimension	1,2 m towards the façade , 1.20 m Height
Counterweight	400kg (differs to project)
Horizontal Movement	Manual by Hand
Wheel Quantity	4 Units Cache Type
Final Coating	Hot Dipped Galvanized (painted according to request)



Şişli Council, İstanbul - Turkey



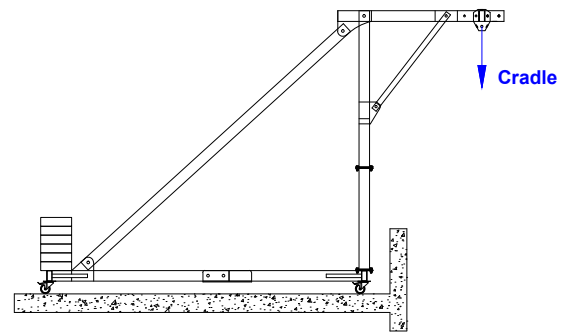
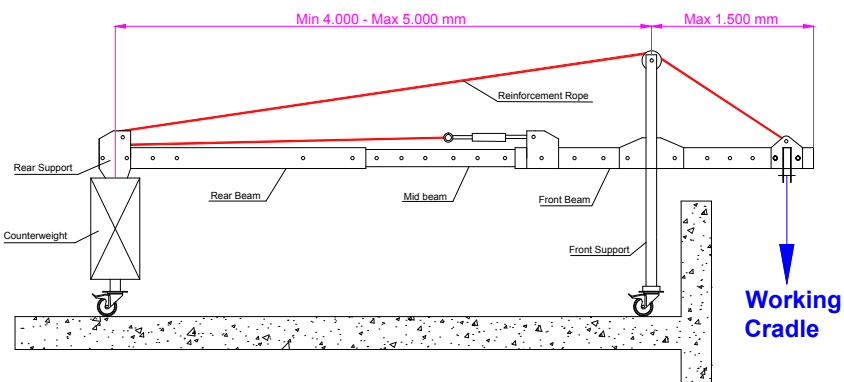
Polis Vakfı, Ankara - Turkey



Acıbadem, İstanbul - Turkey



Eren Energy, Zonguldak - Turkey



AST-15-02

SERIES COUNTERWEIGHT SUSPENSION SYSTEM



- Wheeled suspension system composed of one suspension arm, which passes over the parapet to the façade, and a counterweight arm where weights are placed on the terrace floor of the building.
- Counterweight suspension system is moved manually by hand on the terrace level / floor.
- 4 wheels founded underneath the system can be locked upon the desired point.
- For this system to work effectively; floor surface should be flat and have the standard and quality to bear the systems' weight.
- Upon request the system is manufactured to have either a one person working platform or two person
- Counterweights vary according to suspension arms' and counterweight arms' dimensions
- Suspension arm types vary according to height and dimension of the buildings terrace dimensions and parapet height.
- Manufacturing and assembly is in accordance within EN 1808 standards and norms

FEATURES

Platform	One Person and Two Person Cradle AST 05-AST 10
Suspension Arm Dimension	1,2 m towards the façade , 1.20 m Height
Counterweight	400kg (differs to project)
Horizontal Movement	Manual by Hand
Wheel Quantity	4 Units Cache Type
Final Coating	Hot Dipped Galvanized (painted according to request)



Armada, Ankara - Turkey



Ayhan Kent Plaza, Konya - Turkey



Içdaş, - Turkey



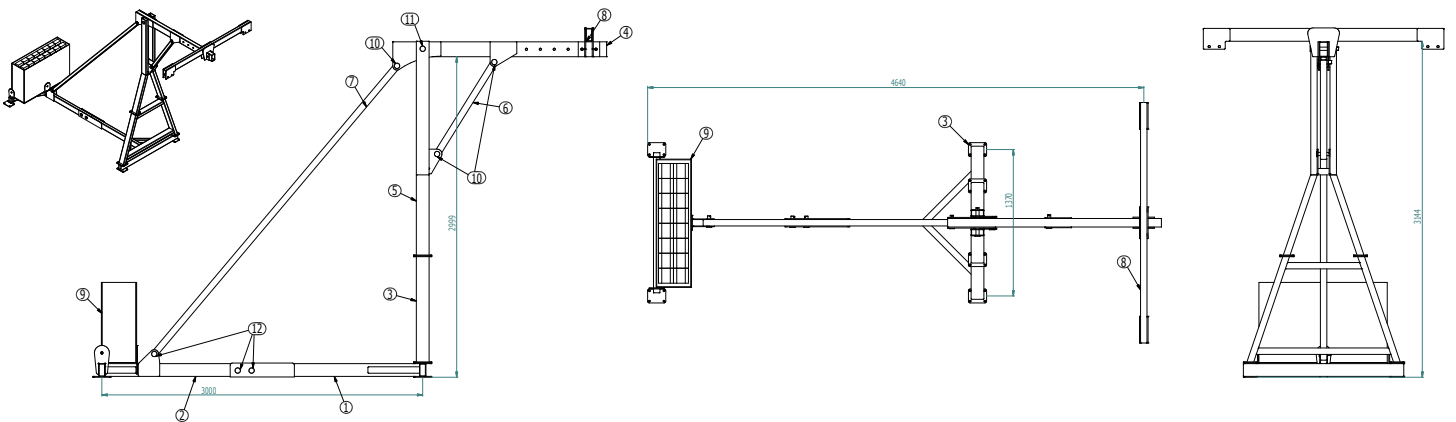
Takasbank, İstanbul - Turkey



Turkcell Cinnah Plaza, İstanbul - Turkey



Afşin Elbistan - Turkey



AST-20

SERIES ANCHORAGE
(LOW RIDE DAVIT) ARM
SUSPENSION SYSTEMED



- It is a suspension arms' system where arm bases are anchored on the terrace floor or on the inner parapet.
- Steel pedestals (brackets) with appropriate intervals, according to the project, are anchored on the terrace floor or on the parapet.
- L type Suspension Arms are used.
- Suspension arms' are fixed with pins to the steel pedestals (brackets).
- Suspension arms are dismantled and mantelled manually by hand and moved.
- The points where the pedestals are anchored should be at the standart and quality to carry the weight of the system.
- According to request the system is manufactured to mantle single person or double person cradle / platform.
- Height of the suspension arms' and dimensions are manufactured in different types in accordance with the parapet height and the buildings terrace dimensions.
- Manufacturing and assembly is in accordance within EN 1808 standards and norms.



Dedeman, Antalya - Turkey



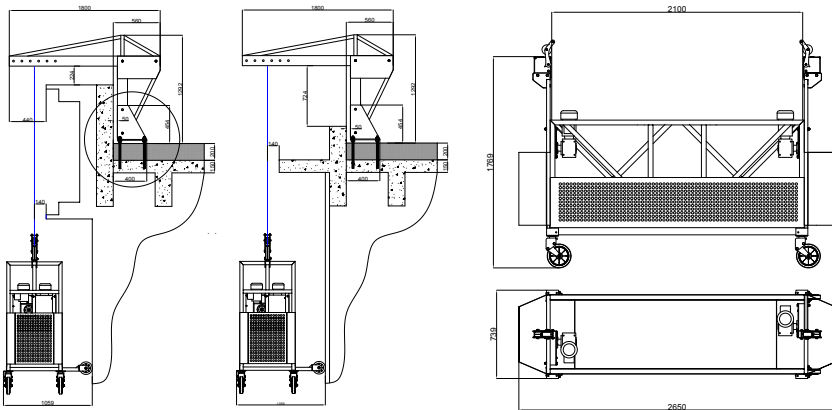
Pelican Hill Residence, Antalya - Turkey



İmpaş, İstanbul - Turkey



Çardak Hotel, Aşkabat



FEATURES

Platforms	Open Person or Double Person Engined Platform AST 05-AST 10
Suspension Arm	L Type
Suspension Arm Dimension	Standard 1 m to the Façade, 1,20 m Height
Vertical Movement	Manual with hand
Anchorage Bolts	4 Pieces M 20
Final Coating	Hot-dipped galvanised (painted according to request).



AST-25

SERIES DAVIT ARM SUSPENSION SYSTEM

- Is a system with special high mast attached to suspension arms pedestals which are either anchored on the building terrace or on the inner parapet
- System is preferred, when necessary, for the working platform to park on the terrace floor / level.
- By means of two davit suspension arms, parapet or other overcoming obstacles are cleared and the platform parked upon the terrace level / floor.
- Steel pedestals (brackets), are anchored according to project and to the platform dimensions, either on to the parapet or on the concrete
- L type Davit Arms are used.
- Davit Arms are fastened / fixed upon

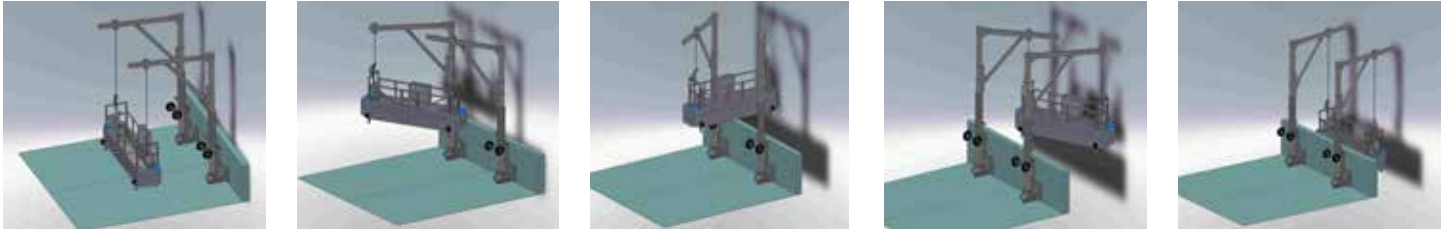
the pedestals (brackets) by the means of pims.

- Davit Arm is manually moved from the pedestals by the means of plug and wear.
- Anchored points of the steel pedestals, should bear the quality and the standards of the systems' weight
- Upon request the system is manufactured to have either a one person working platform or two person
- Suspension arm height and dimensions differ in types in accordance with the parapet height and the buildings' terrace dimensions.
- Manufacturing and assembly is in accordance within EN 1808 standards and norms

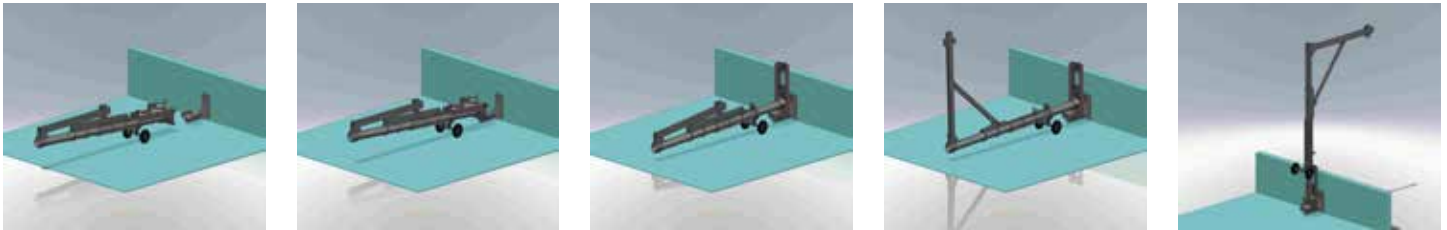
FEATURES

Platform	One Person and Two Person Hoisted Platform AST 05 - AST 10
Davit Arm Type	Long L Type (customized dimensions)
Davit Arm Dimensions	Standard 1,5 m towards the façade and 2,5 height.
Swivel	Manual by hand
Horizontal Movement	Manual by hand
Lifting Winch	Manual by hand
Anchorage Bolt /Pim	4 Units M 20
Final Coating	Hot Dipped Galvanized (painted according to request)

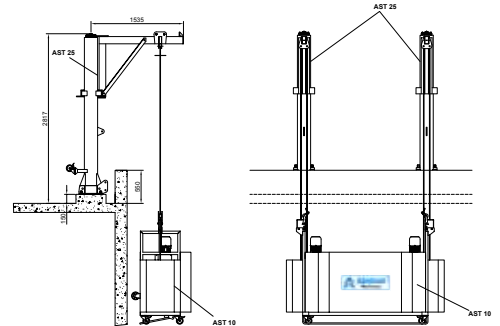
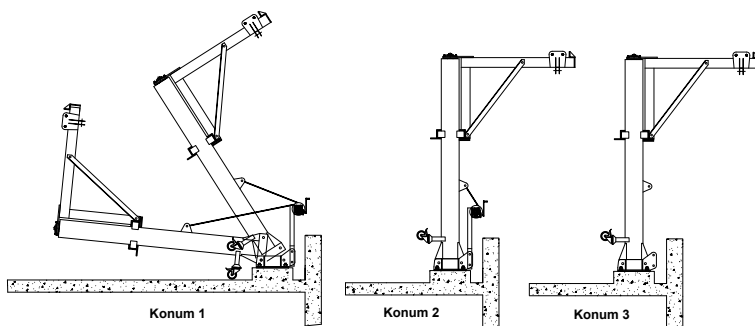
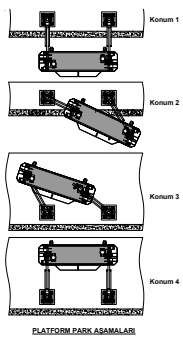
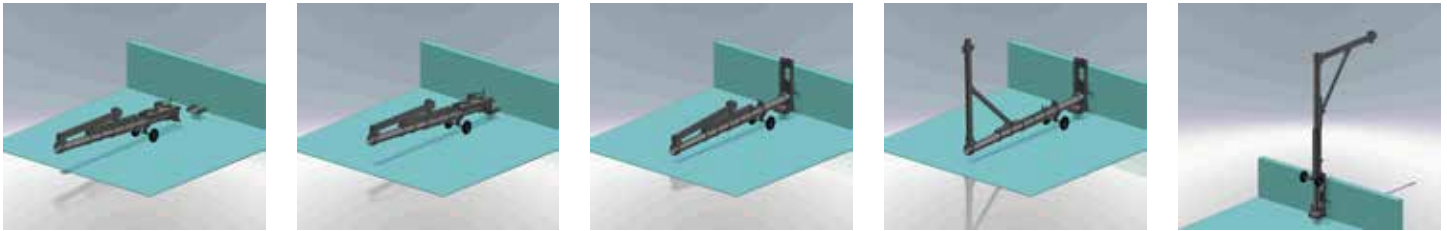
DAVIT ARM SUSPENSION SYSTEM



DAVIT ARM SUSPENSION SYSTEM MOUNTED TO THE PARAPET



DAVIT ARM SUSPENSION SYSTEM MOUNTED TO THE FLOOR



DAVIT SİSTEM - MODEL: AST 25



AST-30

SERIES MONORAIL FAÇADE CLEANING SYSTEM



- It is a façade cleaning system moving horizontally and vertically over aluminum rail (mono rail) connected with the special brackets to the façade.
- As per request and in accordance with the building either one person platform or double/two person platform is used.
- Platform movement can be achieved either by means of manual or automatic special made movement hoists.
- Aluminium monorail is manufactured and mounted in accordance with the buildings' façade shape and height
- Monorail carrying arms (brackets) can be mounted on the façades front side ,on the parapet , inner side of the parapet ,away from the parapet on the concrete floor or under the eaves.
- Rails can be painted either with natural aluminium colour or upon request.
- All movements can be controlled via the control panel inside the working platform.
- Vertical movement is performed via the climbing hoists' mechanism located on the working platform.
- Damage on the facade glass is prevented via the means of 2 polyurethane wheels /bumpers founded on the platforms' front side ,
- Double security wire ropes ,safety lock system and wire rope tension like safety and security measures provide safe working environment.
- Over load sensor,Lower collision bar,Upper and Lower limit switches prevents operator errors.
- Manufacturing and assembly is in accordance within EN 1808 standards and norms



İktisat Bankası, Cyprus



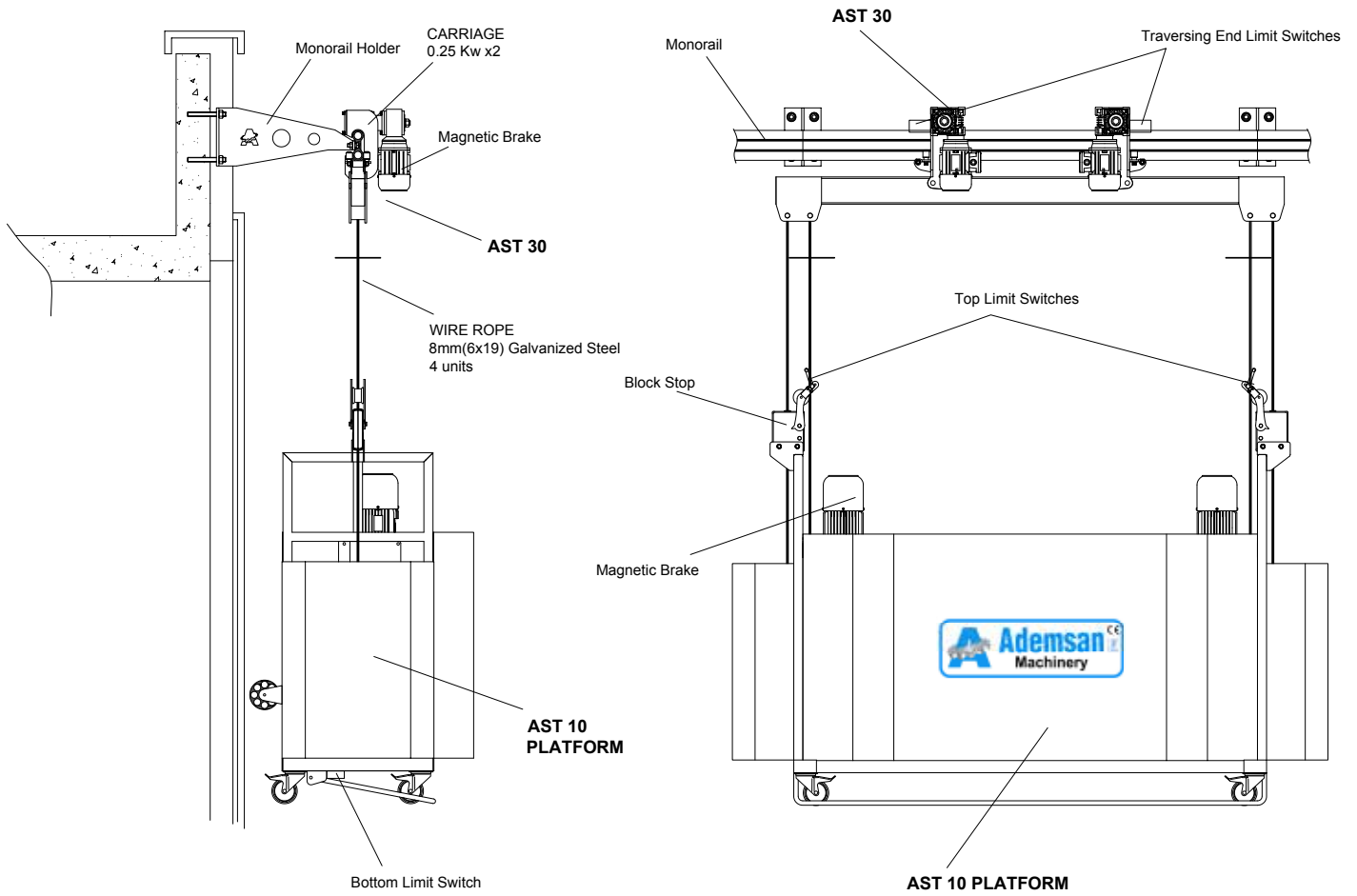
Holiday Inn, Ankara - Turkey



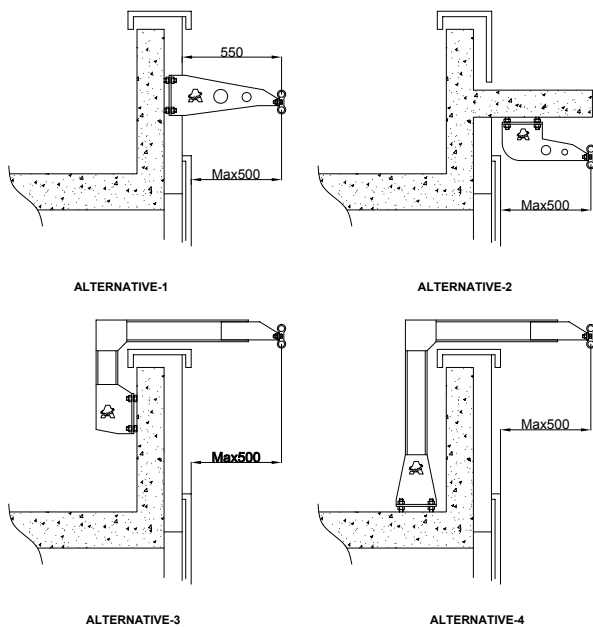
İstanbul Tower, İstanbul - Turkey



Eskişehir Tax Office, Eskişehir - Turkey



MONO RAIL SYSTEM / Ast30



MONO RAIL HOLDER ALTERNATIVES

FEATURES	
Platforms	One or Two Person Hoisted Platforms AST05 - AST 10
Rail	Aluminium 6063 T 6 Serial (6,33 m/kg)
Rail Coating	Natural / As per request (optional)
Bracket Material	Steel
Bracket Dimensions	As per project
Bracket Coating	HotDipped Galvanisation
Hoist	4 m /min Hoisted - Manual
Hoist Control	Cable
Working Capacity	120 Kg / 240 Kg



Tüze Tower, Bursa - Turkey



Akgül Doğukan, İstanbul - Turkey



Eczacılık Genel Müdürlüğü, İstanbul



Bahçelievler Hospital, İstanbul - Turkey



Adıyaman Adliye Sarayı, Adıyaman



CBI İnşaat Beylikdüzü, İstanbul - Turkey



DAP, İstanbul - Turkey



Golden Tulip Otel, Cyprus



Black Sea, Batum



Türkmenistan



Sea Tower, Gürcistan



KN Mühendislik, İstanbul - Turkey



Mesa Kartal, İstanbul - Turkey

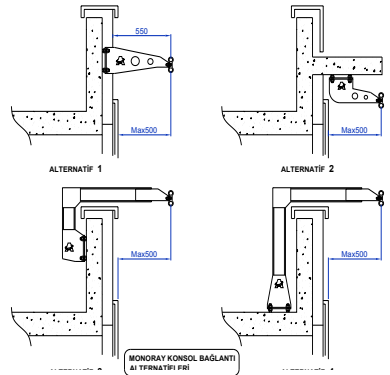
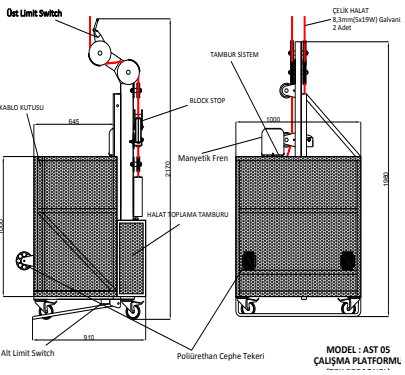


AST-35

SERIES CLIMBING MONORAIL FAÇADE CLEANING SYSTEMS

- It is a façade cleaning system moving horizontally and vertically over aluminum rail (mono rail) connected with the special brackets to the façade.
- As per request and in accordance with the building either one person platform or double/ two person platform is used.
- Platform movement can be achieved either by means of manual or automatic special made movement hoists.
- Aluminium monorail is manufactured and mounted in accordance with the buildings' façade shape and height
- Monorail carrying arms (brackets) can be mounted on the façades front side ,on the parapet , inner side of the parapet ,away from the parapet on the concrete floor or under the eaves.
- Rails can be painted either with natural aluminium colour or upon request.
- All movements can be controlled via the control panel inside the working platform.
- Vertical movement is performed via the climbing hoists' mechanism located on the working platform.
- Damage on the facade glass is prevented via the means of 2 polyurethane wheels / bumpers founded on the platforms' front side ,
- Double security wire ropes ,safety lock system and wire rope tension like safety and security measures provide safe working environment.
- Over load sensor,Lower collision bar,Upper and Lower limit switches prevents operator errors.
- Manufacturing and assembly is in accordance within EN 1808 standards and norms





FEATURES

Used with	AST-05 / AST-10 / AST-10-01
Power	3,2 kW
Wire rope	4 Pieces 8 Mm 6x19
Voltaç	380 V
Control	Cable
Vertical Movement	7 m/min 2 unit 1,1 kW
Horizontal Movement	4 m/min 2 unit 0,25 kW
Platform Weight	400 Kg
Rail	Aluminium 6060 T6 Serial (7 m/kg)
Working Capacity	120 Kg / 240 Kg



AST-40

SERIES FAÇADE CLEANING SYSTEM

- Movable Double jibbed light type façade cleaning system located on the terrace.
- In accordance with the buildings' façade jib length is manufactured between 2,5 m to 5m.
- According to request and in accordance with the project, two person platforms are produced either drummed or hoisted.
- Horizontal movement is performed via one guided rail on concrete or double rail tracks
- For the machine to run at ease on all façade fronts, a backward space from the parapet, a minimum of 2 m space is required.
- By means of hydraulic system the working platforms' distance from the façade is adjusted and the platform can be parked upon the terrace.
- All movements can be controlled via the control panel inside the working platform.
- Upon requirement, cable control or e-cable control systems can be applied.
- AST 40 series façade cleaning systems is preferred upon building heights up to 200m
- Double security wire ropes ,safety lock system and wire rope tension like safety and security measures provide safe working environment.
- Over load sensor,Lower collision bar,Upper and Lower limit switches prevents operator errors.
- Manufacturing and assembly is in accordance within EN 1808 standards and norms



Yolbulan Ataşehir, İstanbul - Turkey



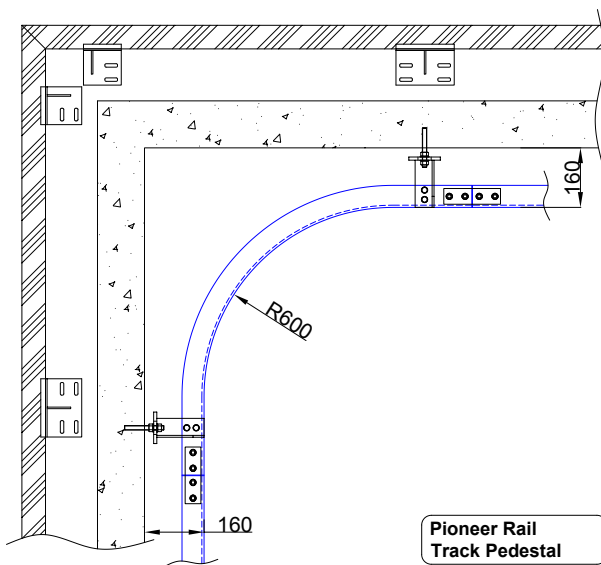
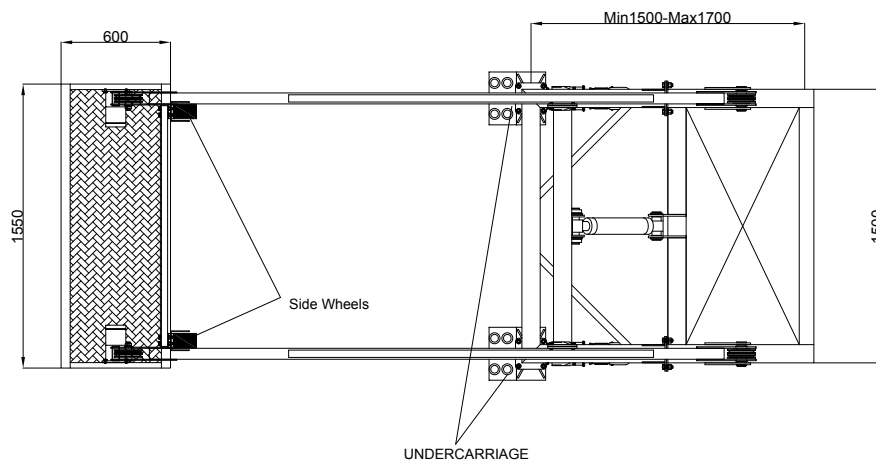
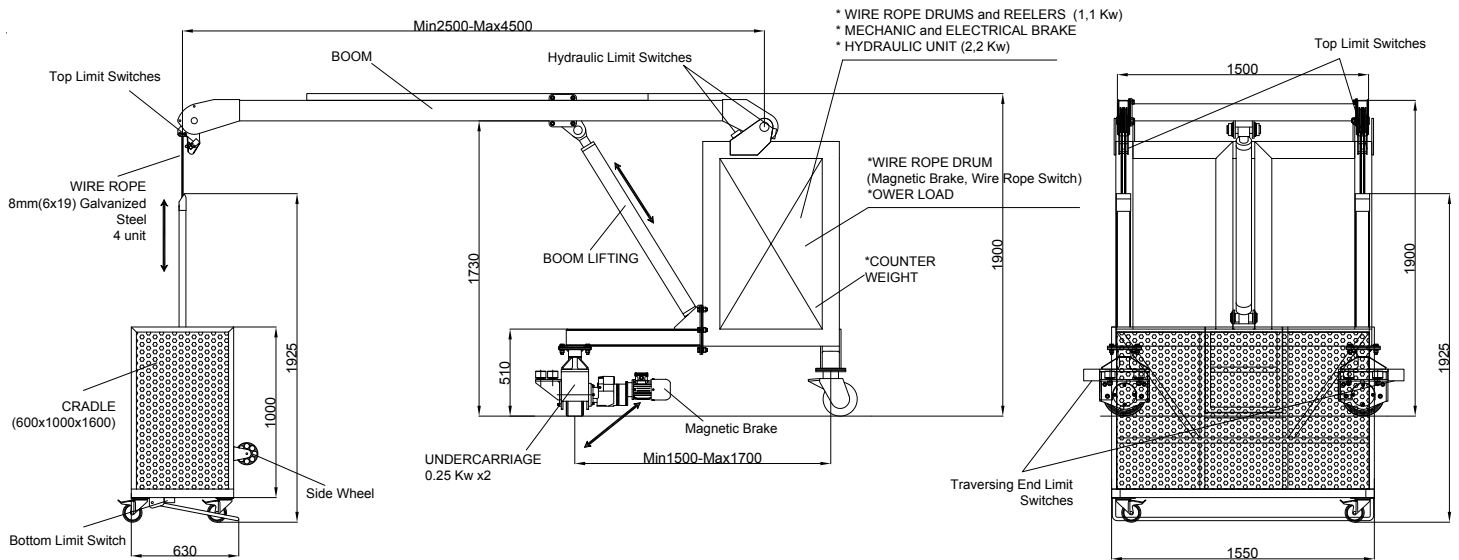
Hampton Otel Kayışehir, İstanbul - Turkey



Wahat Mall, Sudan



Khartoum, Sudan



FEATURES

Platforms	Two Person and Standard Platforms , AST 10, AST 12....
Power	3-5 Kw
Wire Rope	4 Units 8 mm
Voltage	380 V
Control	Cable / E-Cable
Vertical Movement/ Speed	8 m/min 1 Unit 1,1 kw
Horizontal Movement / Speed	4 m /min 2 Units 0,25 kw
Hydraulic Lift	4 m/min 1 Unit 1,5
Safety System	Safety Brakes and Limir Switches
Weight	2.000 +Kg (in accordance to jib lenght and the project)
Machine Coating	Hot dipped galvanisation. Painted according to request
Rail Axis	1300 / 1500 / 1700... mm
Working Capacity	240 Kg
Movement	Concrete Track /Rail (140, 160, 180 mm NPI)
Rail Coating	Hot dipped Galvanize



Burak Plaza İstoç, İstanbul -Turkey



Atlantik Eğitim Kurumları, İstanbul - Turkey



Yolbulan Ataşehir, İstanbul - Turkey



AST-45

SERIES FAÇADE CLEANING SYSTEM

- In accordance with the buildings' façade jib length is manufactured between 2,5 m to 5m.
- According to request and in accordance with the project, two person platforms are produced either drummed or hoisted.
- Horizontal movement is performed via double rail on concrete or single guided rail tracks
- For the machine to run at ease on all façade fronts, a backward space from the parapet, a minimum of 2 m space is required.
- +-45° rotatable rotary spreader / separator arm mounted at the end of the jib allows easy access to corners and the

edges of the building.

- Slewing of the main body allows access /reach to all points on the façade.
- By means of hydraulic system the working platforms' distance from the façade is adjusted and the platform can be parked upon the terrace.
- All movements can be controlled via the control panel inside the working platform.
- Upon requirement, cable control or e-cable control systems can be applied.
- AST 45 series façade cleaning systems is preferred upon building heights up to 400m.
- Double security wire ropes ,safety lock system and wire rope tension like safety and security measures provide safe working environment
- Over load sensor,Lower collision bar,Upper and Lower limit switches prevents operator errors.
- Manufacturing and assembly is in accordance within EN 1808 standards and norms



Al Siniyar Tower, Qatar



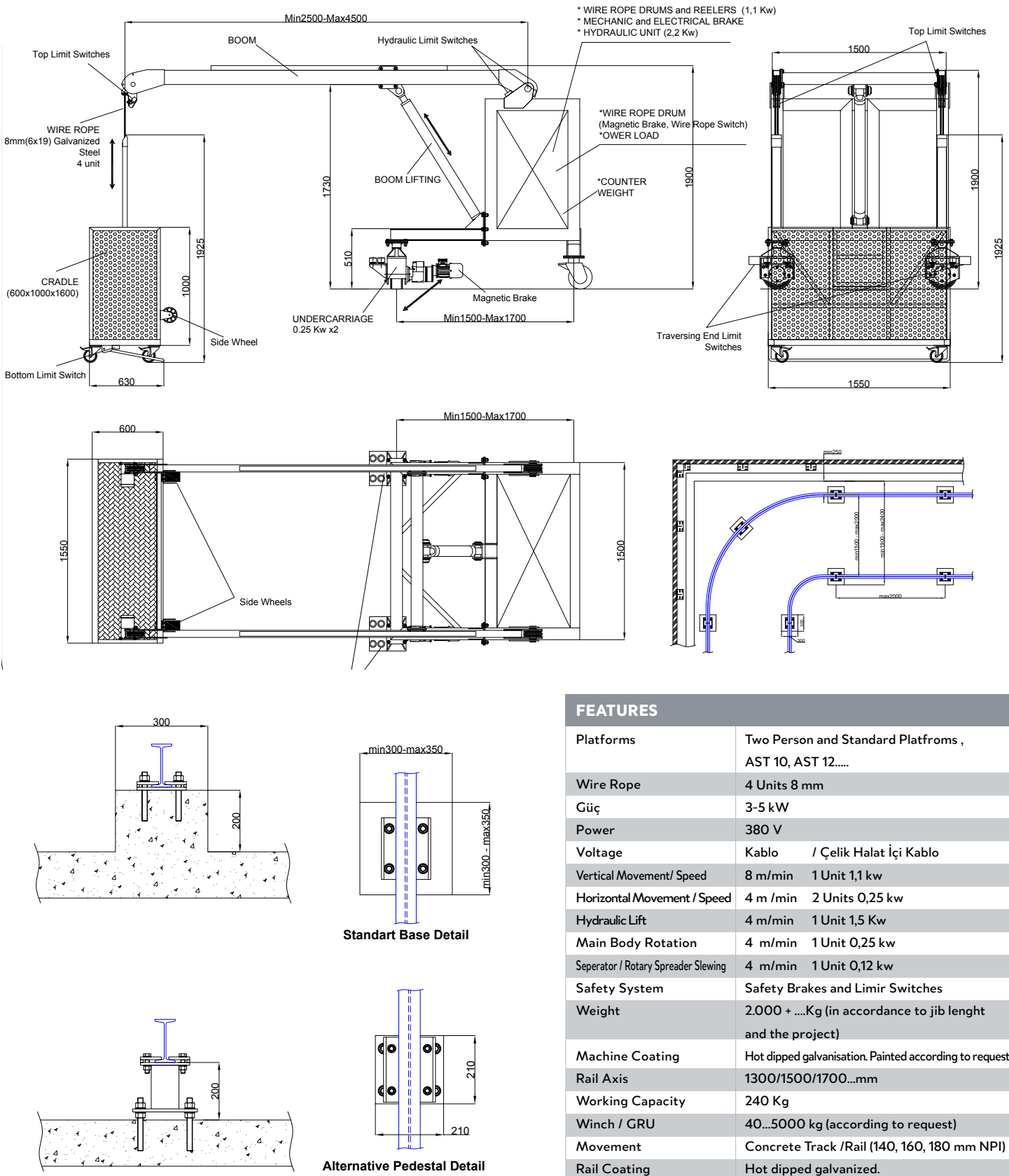
Acı Badem, İstanbul - Turkey



Koç Üniversitesi, İstanbul - Turkey



Çevre ve Şehircilik Bakanlığı, Ankara - Turkey


FEATURES

Platforms	Two Person and Standard Platforms , AST 10, AST 12.....
Wire Rope	4 Units 8 mm
Güç	3-5 kW
Power	380 V
Voltage	Kablo / Çelik Halat İçi Kablo
Vertical Movement/ Speed	8 m/min 1 Unit 1,1 kw
Horizontal Movement / Speed	4 m / min 2 Units 0,25 kw
Hydraulic Lift	4 m/min 1 Unit 1,5 Kw
Main Body Rotation	4 m/min 1 Unit 0,25 kw
Separator / Rotary Spreader Slewing	4 m/min 1 Unit 0,12 kw
Safety System	Safety Brakes and Limir Switches
Weight	2.000 +Kg (in accordance to jib lenght and the project)
Machine Coating	Hot dipped galvanisation. Painted according to request
Rail Axis	1300/1500/1700...mm
Working Capacity	240 Kg
Winch / GRU	40...5000 kg (according to request)
Movement	Concrete Track /Rail (140, 160, 180 mm NPI)
Rail Coating	Hot dipped galvanized.



Fakhroo Tower, Bahreyn



Leogrand Hotel, Batum



Mid Contracting, Qatar



AST-50

SERIES FAÇADE CLEANING SYSTEM

- According to request and in accordance with the project, two person platforms are produced either drummed or hoisted.
- The system can be fixed or movable, horizontal movement is performed upon double rail.
- For the machine to run at ease on all façade fronts, a backward space from the parapet, a minimum of 2,5 m space is required.
- Machines' main body can be risen in order to forgo the parapet or other mechanical obstacles on the terracce.
- +-45° rotatable rotary spreader / separator arm mounted at the end of the jib allows easy access to corners and the edges of the building.
- Slewing of the main body allows access /reach to all points on the façade.
- By means of hydraulic piston lift and the working platfroms' distance from the façade can be adjusted ,according to

the project and as per request, and the platfrom can be parked upon the terrace.

- All movements can be controlled via the control panel inside the working platform.
- Upon requirement, cable control or e-cable control systems can be applied.
- AST 50 series façade cleaning systems is preferred upon building heights up to 500m.
- Double security wire ropes ,safety lock system and wire rope tension like safety and security measures provide safe working environment
- Over load sensor,Lower collision bar,Upper and Lower limit switches prevents operator errors.
- Manufacturing and assembly is in accordance within EN 1808 standards and norms



DAP Burju Kule, İstanbul - Turkey



Enerjisa, Ankara - Turkey



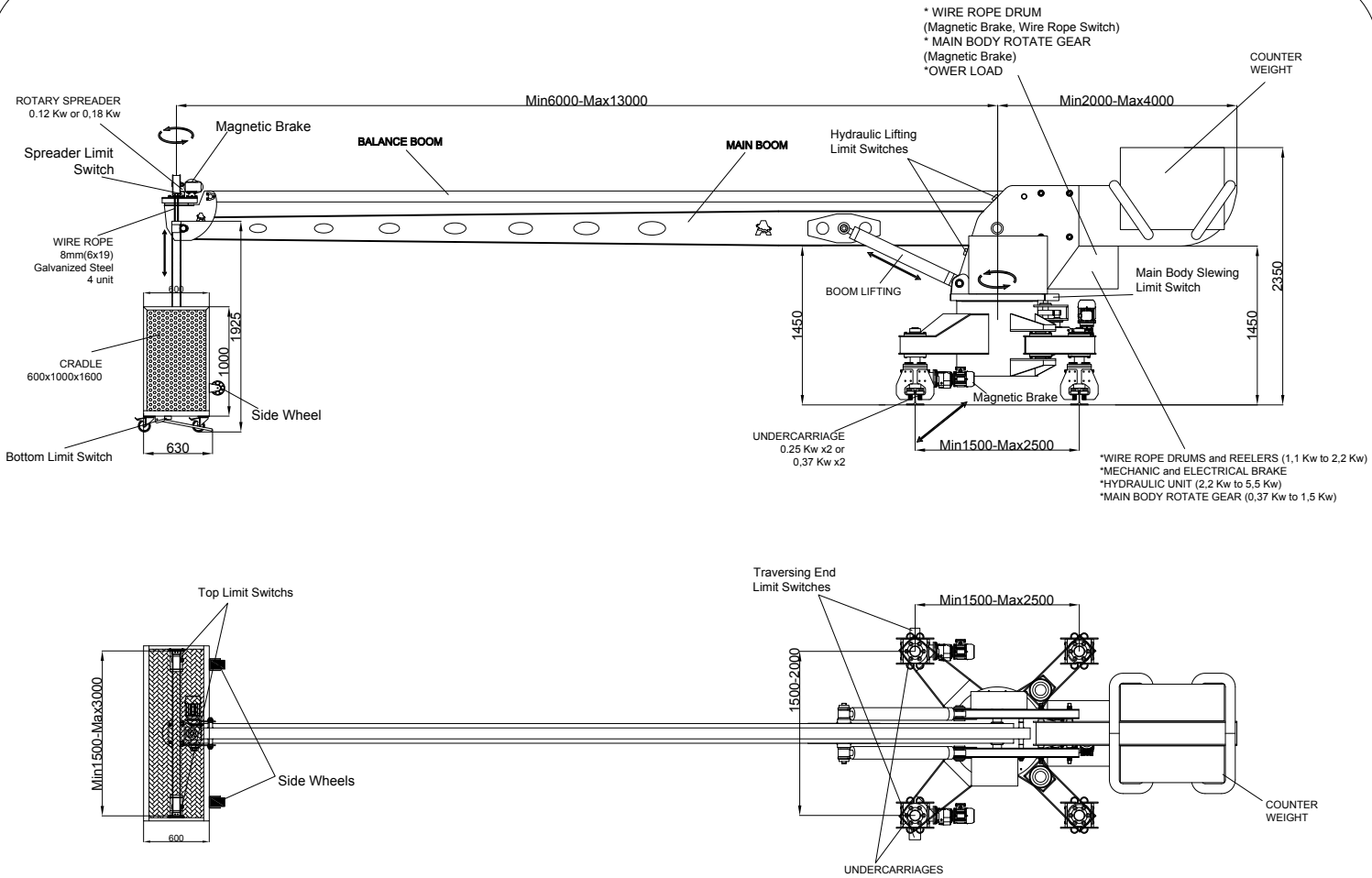
Acibadem, İstanbul



Al Mana Square, Qatar



Oryataş Crowne Plaza, İstanbul - Turkey



FEATURES	
Platforms	Two Person and Standard Platfoms , AST 10 ,AST 12 series
Wire rope	4 Units 8 mm
Power	4-15 kW
Voltage	380 V
Control	Cable / E-Cable
Vertical Movemet / Speed	8 m / min 1 Unit 1,5 Kw
Horizontal Movement / Speed	4 m /min 2 Units 0,50kw
Hydraulic Lift	4 m/min 1 Unit 2,2 Kw
Main Body Rotation	4 m/min 1 Unit 0,50 kw
Seperator / Rotary Spreader Slewing	4 m/min 1 Unit 0,12 kw
Safety System	Secondary Safety Brakes and Limir Switches
Weight	5.000 +Kg (in accordance to jib lenght and the project)
Machine Coating	Hot dipped galvanisation. Painted according to request
Rail Axis	1500 / 2000 / 2500 ...mm
Working Capacity	240 Kg
Winch / GRU	40...500 kg (according to request)
Movement	Steel Track /Rail (140, 160, 180,200 mm HEA)
Rail Coating	Hot dipped galvanized



- 1-) Jeddah, Suidi Arabia
- 2-) Tarım Bakanlığı, Turkey
- 3-) Radison Blu, Turkey
- 4-) Double Tree, Turkey
- 5-) Juffair, Bahreyn
- 6-) Retaj Hotel, Turkey



AST-60

SERIES FAÇADE CLEANING SYSTEM

- It is a façade cleaning system that runs on the buildings terrace via double rails mounted to the inner side of the parapet.
- It is designed to be used on the terrace levels where there is limited space.
- Applicable to the buildings that have reinforced parapets and can meet the machine loads.
- Manufacturing is performed according to the buildings façade, jib length between 2,5m and 5 m
- On request and upon the project, engine double person or drummed platforms can be used.
- Vertical movement performed via double rail.
- The machine requires a minimum of 1 m space backward to run all façades.
- The +-45 °rotatable separator arm mounted at the end of the jib, provides convenient access to the corners.
- By the means of main bodies engine rotation capability, access to the desired point on the façade is provided.
- By the means of hydraulic system, working platform's distance from the façade can be adjusted and thus the platform can be parked on the terrace.
- All movements can be controlled via control panels founded on the main body and the working platform itself.
- Upon request ; cabled control or wire rope control (128 bit wireless control or e-cabled wire rope) systems can be applied.
- Such safety systems like; double safety suspension lines,block stop safety system,wire rope tension controllers provides safe working environments.
- Via ; overload sensor system,collision sensor bar , lower and upper limit switch operator errors are prevented.
- Manufacturing and assembly is in accordance within EN 1808 standards and norms.



DAP Royal Center, Istanbul - Turkey



Syliyah Tower, Katar



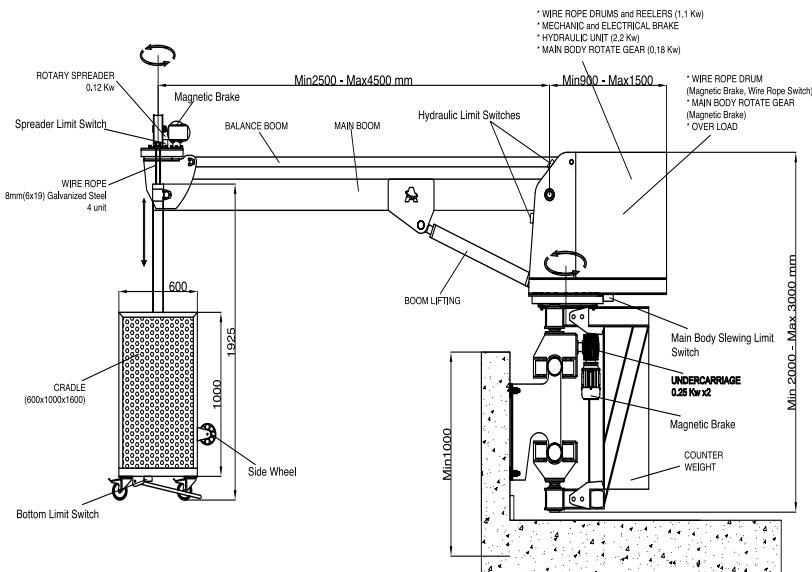
Adiyaman Üniversitesi Devlet Hastanesi, Adiyaman



Adiyaman Üniversitesi Devlet Hastanesi, Adiyaman



Adiyaman Üniversitesi Devlet Hastanesi, Adiyaman



FEATURES

Platforms	Double Person and Standart Platforms , AST 10, AST 12... ect.
Wire Rope	4 Pieces 8 mm
Power	3-5 kW
Voltage	380 V
Control	Cable / Wire Rope Cable (e-cable)
Vertical Movement/Speed	8 m /min 1 Unit 1,1 Kw
Horizontal Movement/Speed	4 m/min 2 Unit 0,25 kw
Hydraulic Lift	4 m/min 1 Unit 1,5 kw
Main Body Rotation	4 m/min 1 Unit 0,25 kw
Separator / Rotary Spreader Slewing	4 m/min 1 Unit 0,12 kw
Safety System	Safety Brakes and Limit Stoppers
Weight	1.250 +.....Kg (according to jib lenght and to the project)
Machine Coating	Hot dipped galvanisation. Painted according to request
Rail Axis	600 / 900 / ... Mm
Working Capacity	240 Kg
Crane / Glass Replacement Unit	40...50 kg (according to request)
Movement	Rail (90,114 mm Steel Pipe Rail)



- Telescopic jibbed heavy type façade cleaning system mounted on the terrace.
- In accordance with the buildings' façade jib length is manufactured between 10 m to 40m
- AST 70 series machines, are high rise and preferred on buildings with a lot of elevation differences
- According to request and in accordance with the project, two person platforms are produced either drummed or hoisted.
- As the system can be both movable and fixed, horizontal movement is performed upon double rail.
- If the machine is to be movable, a movement area of 3 m rail axis is required on the terrace.
- Machines' main body can be risen in order to forgo the parapet or other mechanical obstacles on the terrace.
- Upon requirement and according to the project, with the main bodies' telescopic movement machine can be hidden.
- $\pm 45^\circ$ rotatable rotary spreader / separator arm mounted at the end of the jib allows easy access to corners of the building.
- Slewing of the main body allows access /reach to all points on the façade.
- By means of hydraulic piston lift and the working platforms' distance from the façade can be adjusted, according to the project and as per request, and the platform can be parked upon the terrace.
- All movements can be controlled via the control panel inside the working platform.
- Upon requirement, cable control or e-cable control systems can be applied.
- AST-70 series façade cleaning systems is preferred upon building heights up to 500m.
- Double security wire ropes, safety lock system and wire rope tension like safety and security measures provide safe working environment
- Over load sensor, Lower collision bar, Upper and Lower limit switches prevents operator errors.
- Manufacturing and assembly is in accordance within EN 1808 standards and norms



AST-70

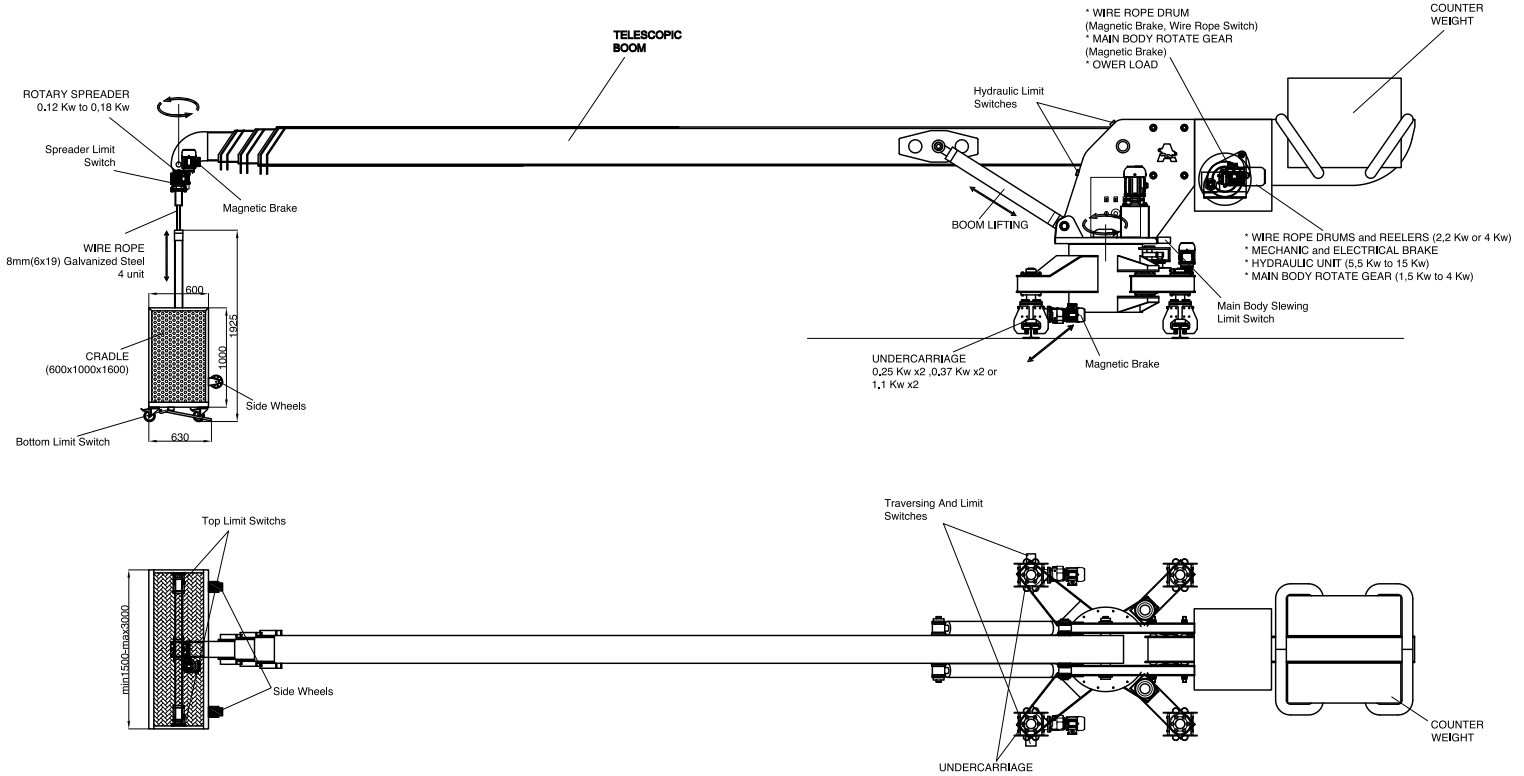
SERIES FAÇADE CLEANING SYSTEM

Acibadem, İstanbul - Turkey



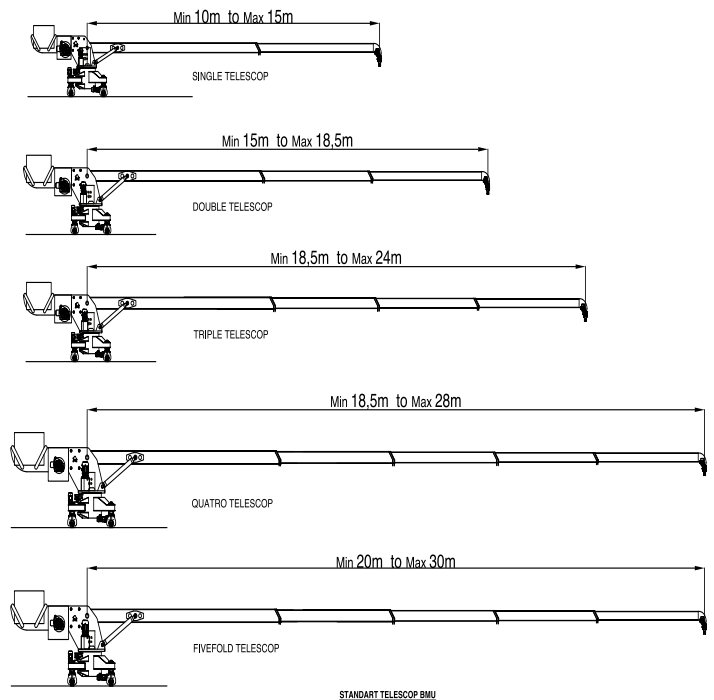
Bayraktar, Ankara - Turkey





FEATURES

Platforms	Two Person and Standard Platforms, AST 10, AST 12 series
Wire rope	4 Ad. 8 Mm
Power	4-35 kW
Voltage	380 V
Control	Cable / E-Cable
Vertical Movemet / Speed	8 m / min 1 Unit 1,5 Kw
Horizontal Movement / Speed	Fixed / 4 m /min 2 Units 0,50kw
Hydraulic Lift	Fixed / 4 m/min 1 Unit 2,2 Kw
Main Body Rotation	4 m/min 1 Unit 0,50 kw
Seperator / Rotary Spreader Slewing	4 m/min 1 Unit 0,12 kw
Safety System	Secondary Safety Brakes and Limir Switches
Weight	10.000+Kg (in accordance to jib lenght and the project)
Machine Coating	Hot dipped galvanisation. Painted according to request
Machine Axis	2.000 / 2.500 / 3.000... Mm
Working Capacity	240 Kg
Winch / GRU	40...500 kg (according to request)
Movement	Fxed / Steel Rail (140, 160, 180, 200 mm HEA)
Rail Coating	Hot Dipped Galvanisation





Hilton, İstanbul - Turkey



Arteks, Kırşehir - Turkey



Ege Yapı, Ankara- Turkey

DAP Tango Tower, İstanbul - Turkey



Green Park, Ankara - Turkey









AS 350 AS 750 AS 1000

ELECTRICAL SUSPENDED SCAFFOLDING SYSTEM

- It can be used for façade cleaning, painting, coating, plastering, maintenance and repair etc.
- Practical installation, portability and modular structure of the suspended scaffolding system provide saving from time and manpower.
- Working platforms are modular and dividable to 1 to 4 meters so they can be used both in narrow and wide sides of the building.
- Vertical movement speed is 7m / min.
- Hoist Traction Mechanism provides endless working range.
- Electromagnetic brakes and block stop mechanisms which will be automatically put in charge in case of wire rope break off and electromagnetic breaks used in self breaking gear boxes will support safety system.
- Double safety suspension lines are available in case of necessity.
- Platform can be moved down manually in case of power cut.
- Our products are under 2 years guarantee against manufacturing and montage faulties.
- Our products are manufactured under European EN1808 rules and norms and have CE certificate.
- On demand we manufacture specific designed suspended scaffoldings for specific buildings.



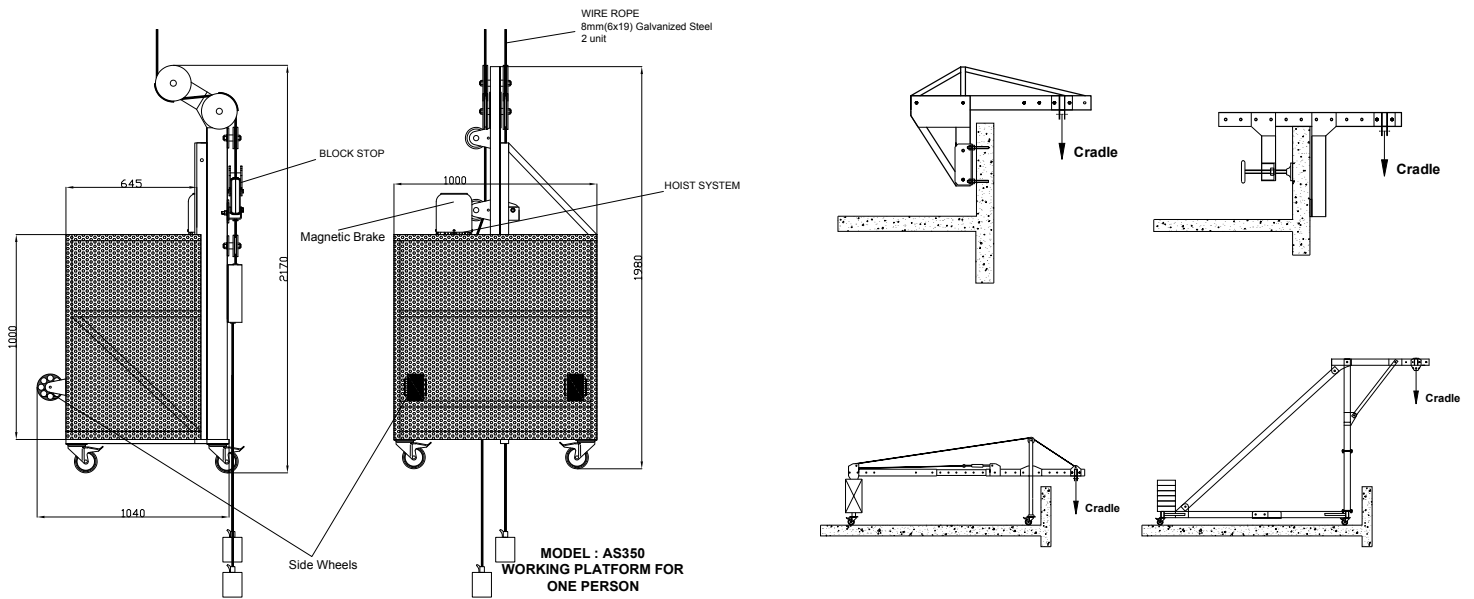
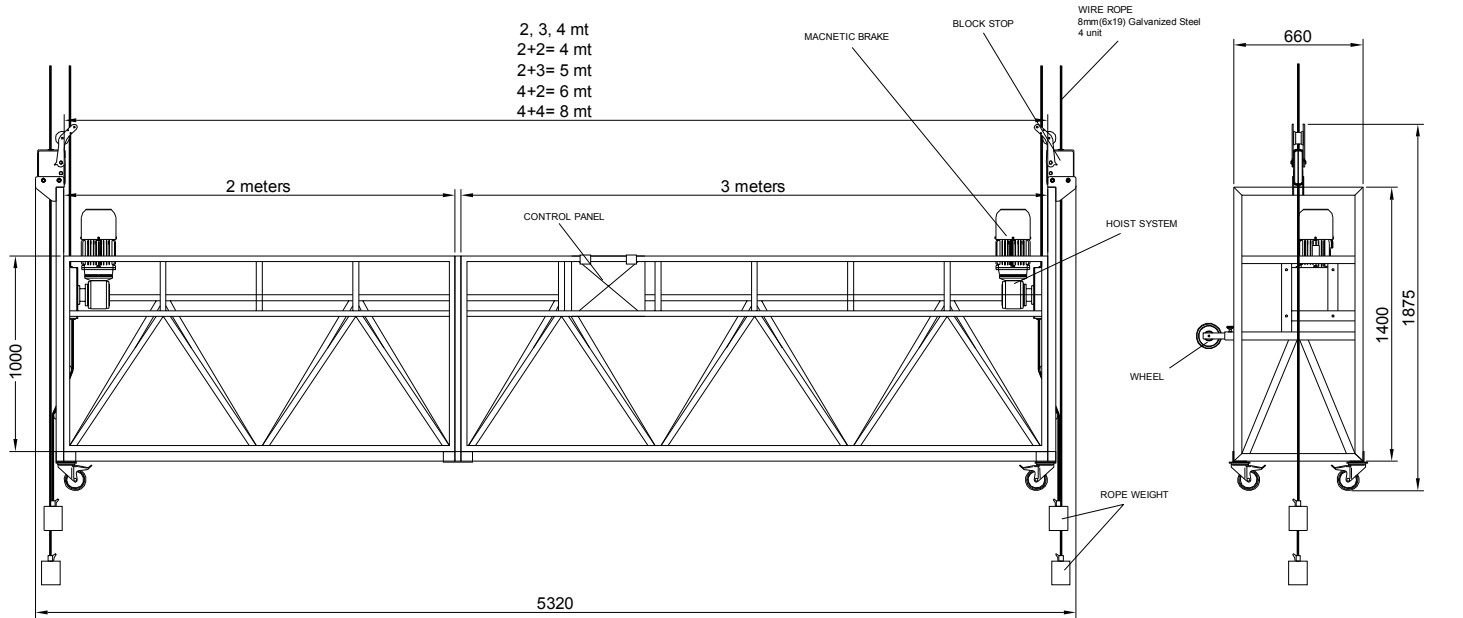
Fer Yapı, İstanbul - Turkey



Hayat Plaza, Ankara - Turkey



Nevada, İstanbul - Turkey



TEKNİK ÖZELLİKLER	AS 350	AS 750	AS 1000
Hoisting Capacity (kg)	120	500	800
Power	1,1 kW (1 Ad)	2,2 kW (2x1,1 kW)	3 kW (2x1,5 kW)
Hoisting Speed	7Mt/Dk	7Mt/Dk	7Mt/Dk
Cradle Dimensions (cm)	100x66x110 / 600x66x110	200, 300, 400, 500, 600, 700x66x110	200, 300, 400, 500
Safety Features	1 Unit Block Stop Electromagnetic Break	2 Unit Block Stop Electromagnetic Break	2 Unit Block Stop Electromagnetic Break
Wire Rope Features	8mm (16x19) Galvanized	8mm (16x19) Galvanized	8mm (16x19) Galvanized
Voltage	380 V	380 V	380 V



Kontursel, İstanbul - Turkey



Bursa Stadium, Bursa - Turkey



Konutkent, Ankara - Turkey



Counterweight Suspension Arms:

It is used on the buildings have flat roofs. It is practical and easy to use. Counterweights are placed on the back of the arms. Horizontal movement is performed manually.



Parapet Clamp Arms:

Light, practical, functional, portable arms are preferred if there is a strong parapet wall. 1 set contains 2 fixing clamp arm. Each of the arm has 1000 kg capacity. Provided free with all models of suspended scaffolding platforms.



Electrical Control Panel

CP100

Products	AS350, AS750, AS1000
Brand	Moeller, Schneider
Weight	5 kg



Block Stop Mechanism

BS 100

Products	AS350, AS750, AS1000
Allowable Load	1500 Kg
Wire Rope	8-10 mm (6 x 19 type)
Rope Lock Distance	150 mm
Weight	5 kg



Hoist Traction Mechanism

HT500

HT800

Products	AS350, AS750	AS1000
Hoisting Capacity	500 Kg	750 Kg
Vertical Speed	7m /min	7m /min
Motor Power / Voltage	1,1 kW / 380V	1,5 kW / 380V
Wire Rope	8 mm (6 x 19 type)	10 mm (6 x 19 type)
Weight	45 Kg	55 Kg



Steel Wire Rope

8mm

10mm

Products	AS350, AS750	AS1000
Breaking Strength	3,546 kgf	4,600 kgf
Type	6 x 19	6 x 19
Protection	Galvanized	Galvanized
Weight	0,23 kg / m	0,37 kg / m



Baran Lojistik, İstanbul - Turkey



Perla Vista Plaza, İstanbul - Turkey



Deriner Barajı, Artvin - Turkey



SPECIAL DESIGN

ELECTRICAL SUSPENDED SCAFFOLD

- Used in various such as façade coating, painting, plastering and maintenance.
- Practical installation, portability and modular structure of the suspended scaffolding system saves time and manpower.
- Electrical suspended scaffolds according to buildings' façade are 1-6 m dividable /seperable
- Lifting speed is 7 m per meter
- Due to hoist traction mechanism it provides endless working range.
- Platforms are equipped with hoist brake and block stop systems.
- Double safety suspension lines are available for safety of operator and the platform.
- In case of power cut, manually the system can be lowered.
- Products hold a 2 year guarantee.
- All our products are according to European EN 1808 standards and in vformance with CE.



Türk Telecom, Ankara - Turkey



Loft Tower, Ankara - Turkey



İzdemir, İzmir - Turkey

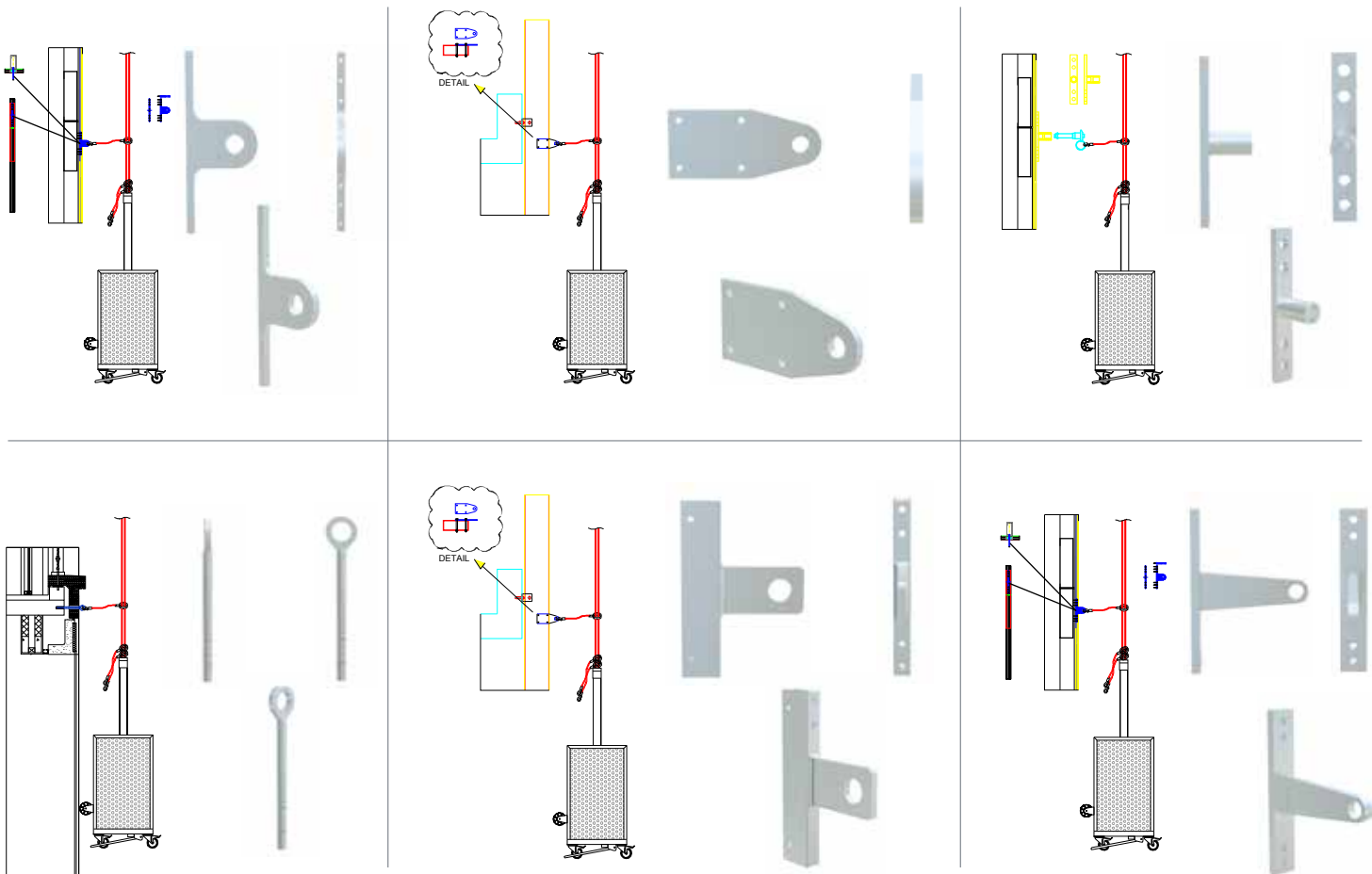


Lavida Balgat, Ankara - Turkey



RESTRAINT SOCKETS

- On buildings where the total descent is 40m or more in height, restraint systems are used for safety and security of the platform.
- In accordance with the building height, first band of restraint sockets are applied on the first 40 m then each and every 20 m.
- As per request the quantity and the ranges could be incremented.
- Horizontal spacing depends on the width of the platform ; application approximately is performed every 2 m's
- Connecting point of the sockets and their ranges are calculated in detail by our project engineers.
- Sockets can be connected upon profiles or upon carrier elements.
- Restraint socket system consist of ; one female sockets connected on the façade , a ring connected upon the wire rope from the platform and a steel ring connected in between the joists.
- Sockets can be either stainless steel or



Quality & Production

We manufacture the machines in the awareness and importance that they run smoothly long years. All parts and pieces are manufactured at high standards and are individually checked, tested. All the machines produced are tested many times over their capacity and are gotten ready for their mission at the site.



Quality Standards

- EN 1808 European Norms
- CE Certificate
- 98/37 EC Machinery Safety Directive
- 2004/108 / EC Electromagnetic Compatibility Directive
- 2006/95 / EC Low Voltage Directive

Safety Systems

- Electromagnetic brake
- Block stop brake system
- Overload switch
- Emergency stop
- Manually descend / lowering system
- Façade wheels
- Safety rope
- Top collision safety switch
- Lower collision safety switch
- Hydraulic upper switch
- Hydraulic lower switch
- Telescopic system safety switch
- Right-left end switch
- The main body right - left switch
- Rotary / Separator arm right - left switch





Ademsan
Machinery



FACTORY

Dağyaka Mahallesi 2002. Sokak
No:11 Kazan - Sarayköy - ANKARA / TURKEY
Tel: +90 312 394 04 74 • Fax: +90 312 395 31 44

İSTANBUL

İkitelli Org. San. Böl. Eskop San. Sit.
C5 Blok No: 225 İkitelli - İSTANBUL / TURKEY
Tel: +90 212 549 12 40 • Fax : +90 212 549 12 41
Gsm: +90 530 781 21 56

www.ademsan.net • info@ademsan.net

