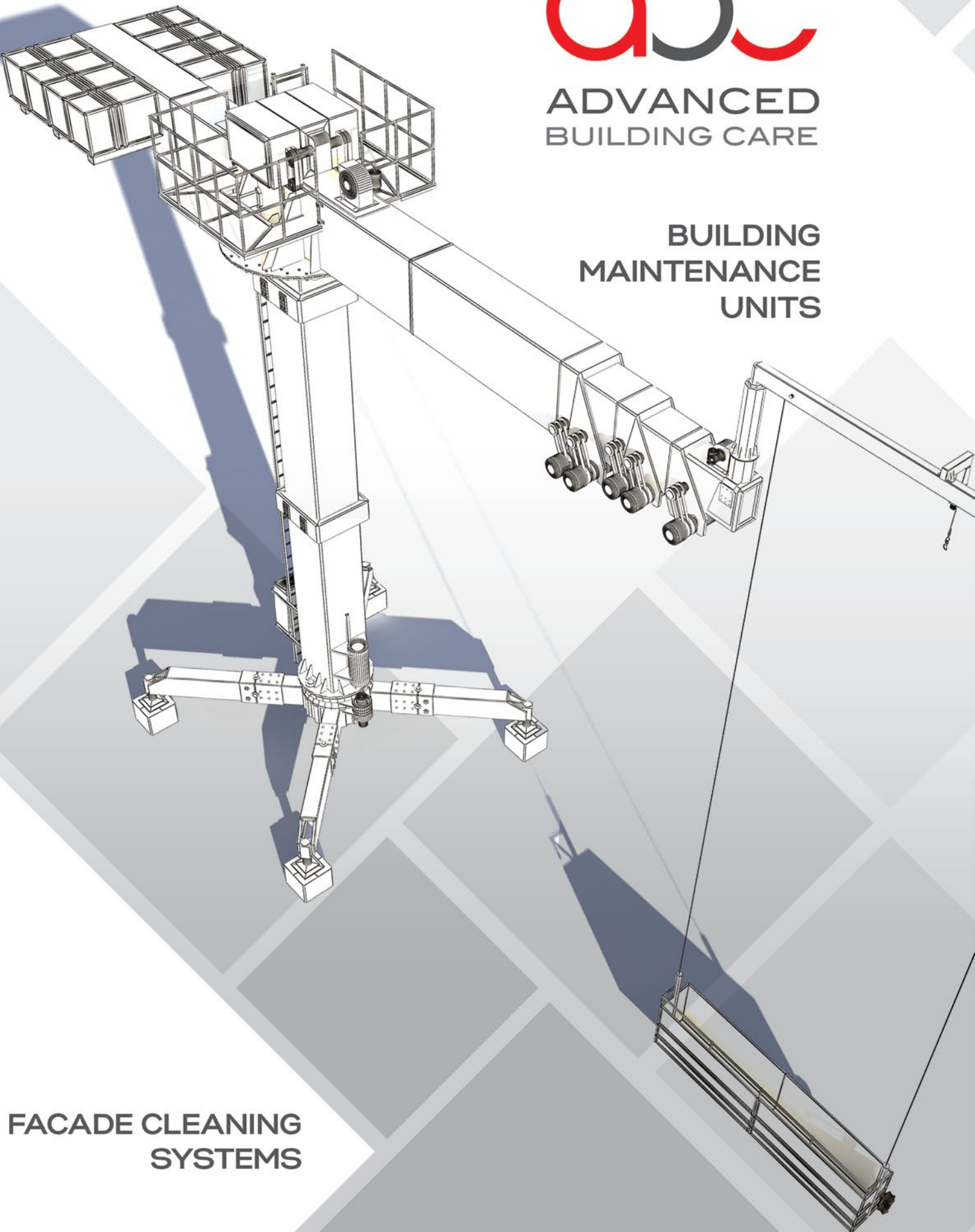


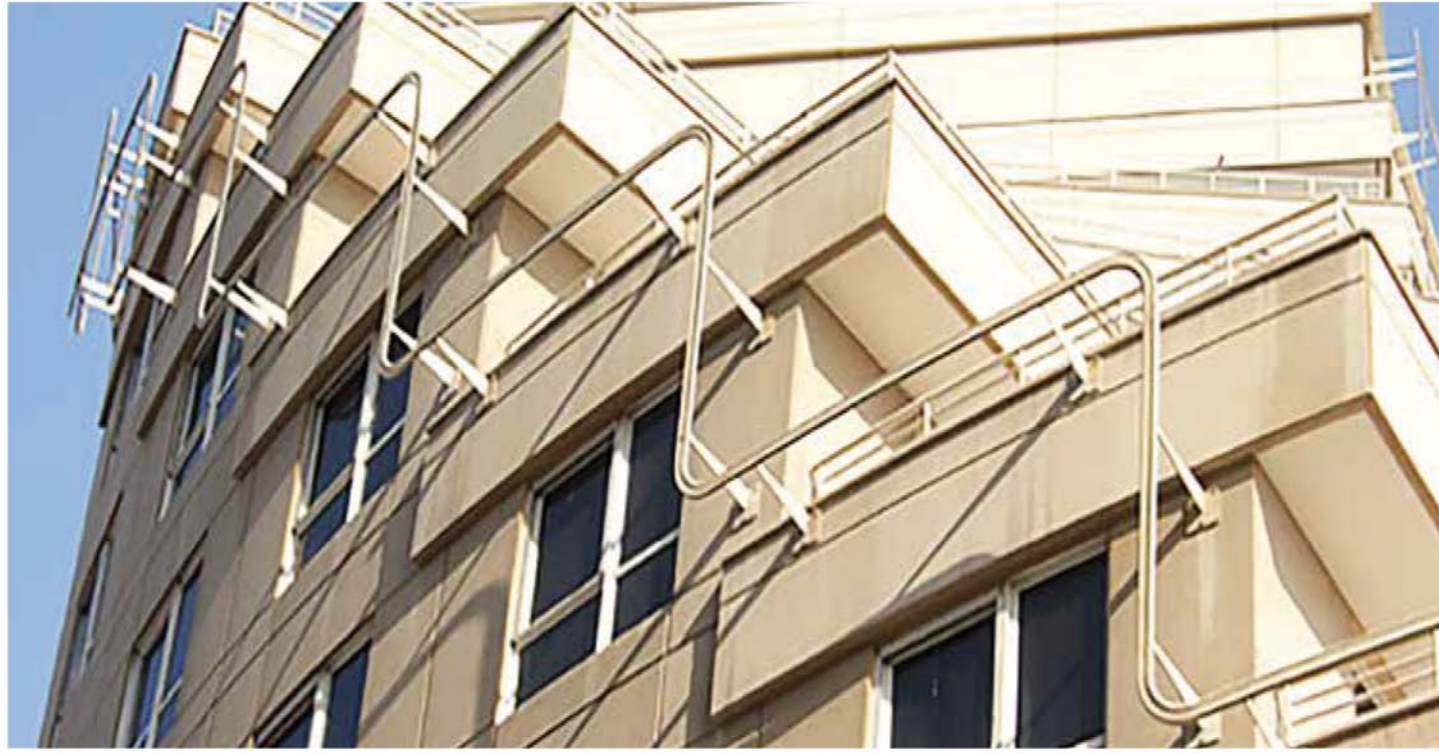


**ADVANCED  
BUILDING CARE**

**BUILDING  
MAINTENANCE  
UNITS**



**FACADE CLEANING  
SYSTEMS**



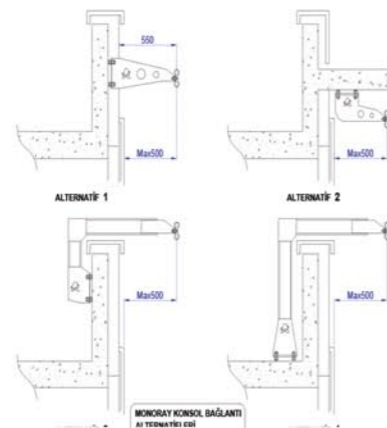
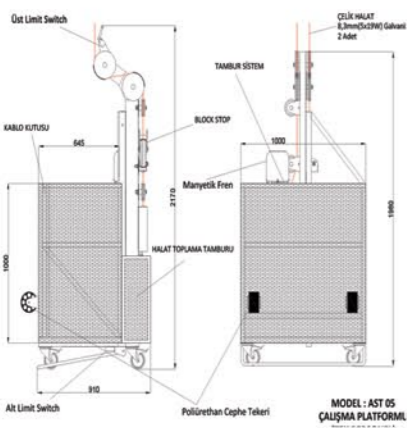
## ABOUT US

Our company, leading is a supplier of Light Construction Machines is located in Riyadh in the Kingdom of Saudi Arabia.

**ABC** provides sales, assembly, maintenance and repair services supplier of Building Maintenance Units, Electrical Suspended Scaffoldings, Our international partners manufacture special designed machines and Platforms along with the standard products by using modern machines such as CNC process, CNC laser according to customer demands. Our manufactures has a multidisciplinary quality control concept. All parts of the machines are checked through strict controls and tests in all stages of production.

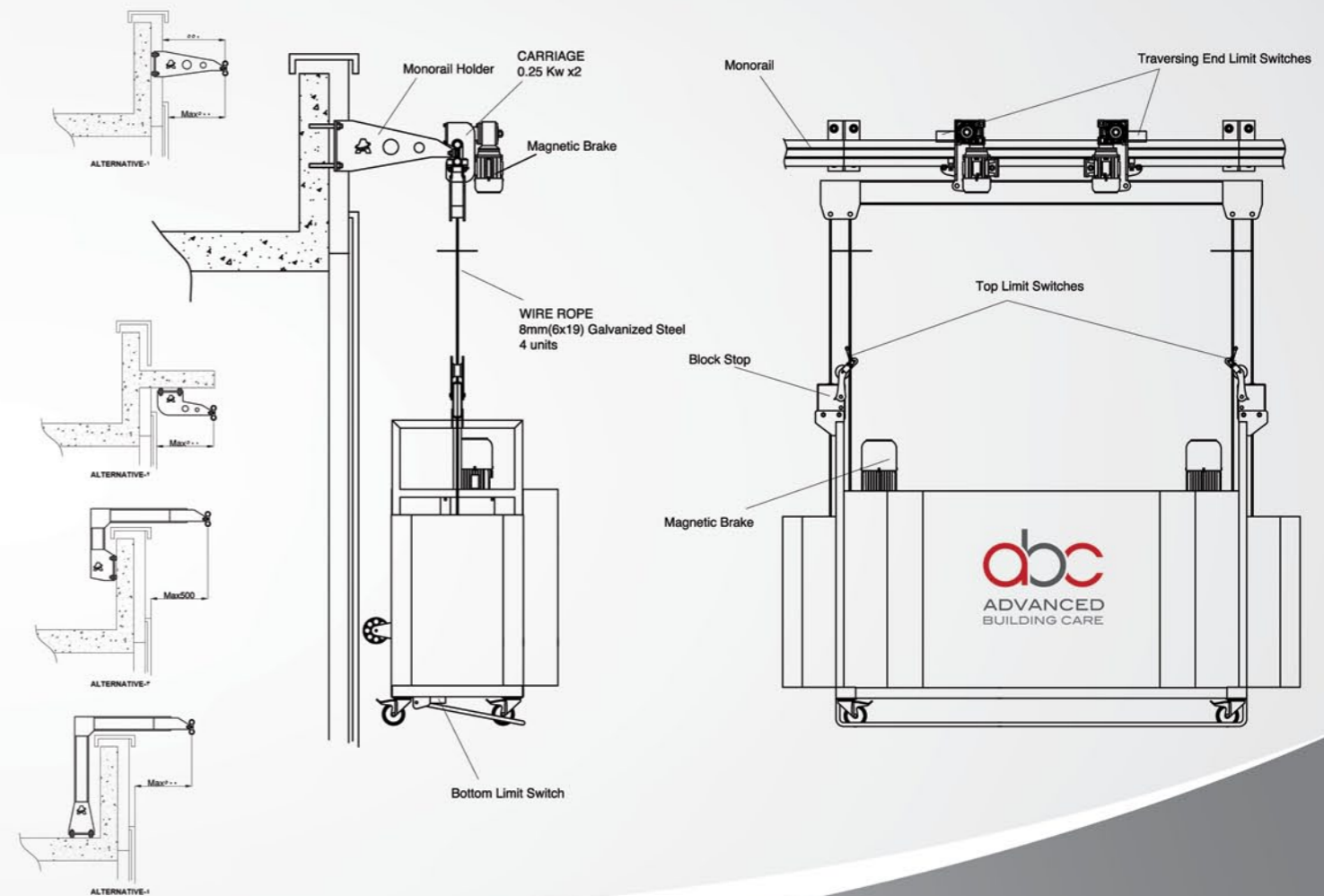
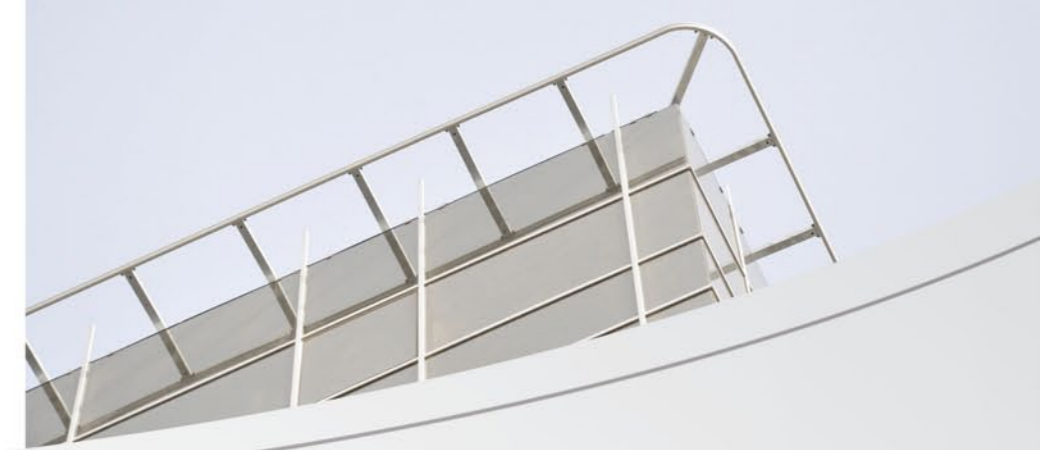
**ABC** serves its customers with a professional technical staff, continuing improvement and innovative concept and a wide capacity of machinery.

**ABC** succeeded considerable projects with its customer satisfaction and quality focused operation style.



FEATURES	
Used with	AST-05 / AST-10 / AST-10-01
Power	3,2 kW
Wire rope	4 Pieces 8 Mm 6x19
Volтаж	380 V
Control	Cable
Vertical Movement	7 m/min 2 unit 1,1 kW
Horizontal Movement	4 m/min 2 unit 0,25 kW
Platform Weight	400 Kg
Rail	Aluminium 6060 T6 Serial (7 m/kg)
Working Capacity	120 Kg / 240 Kg





## MONO RAIL SYSTEM

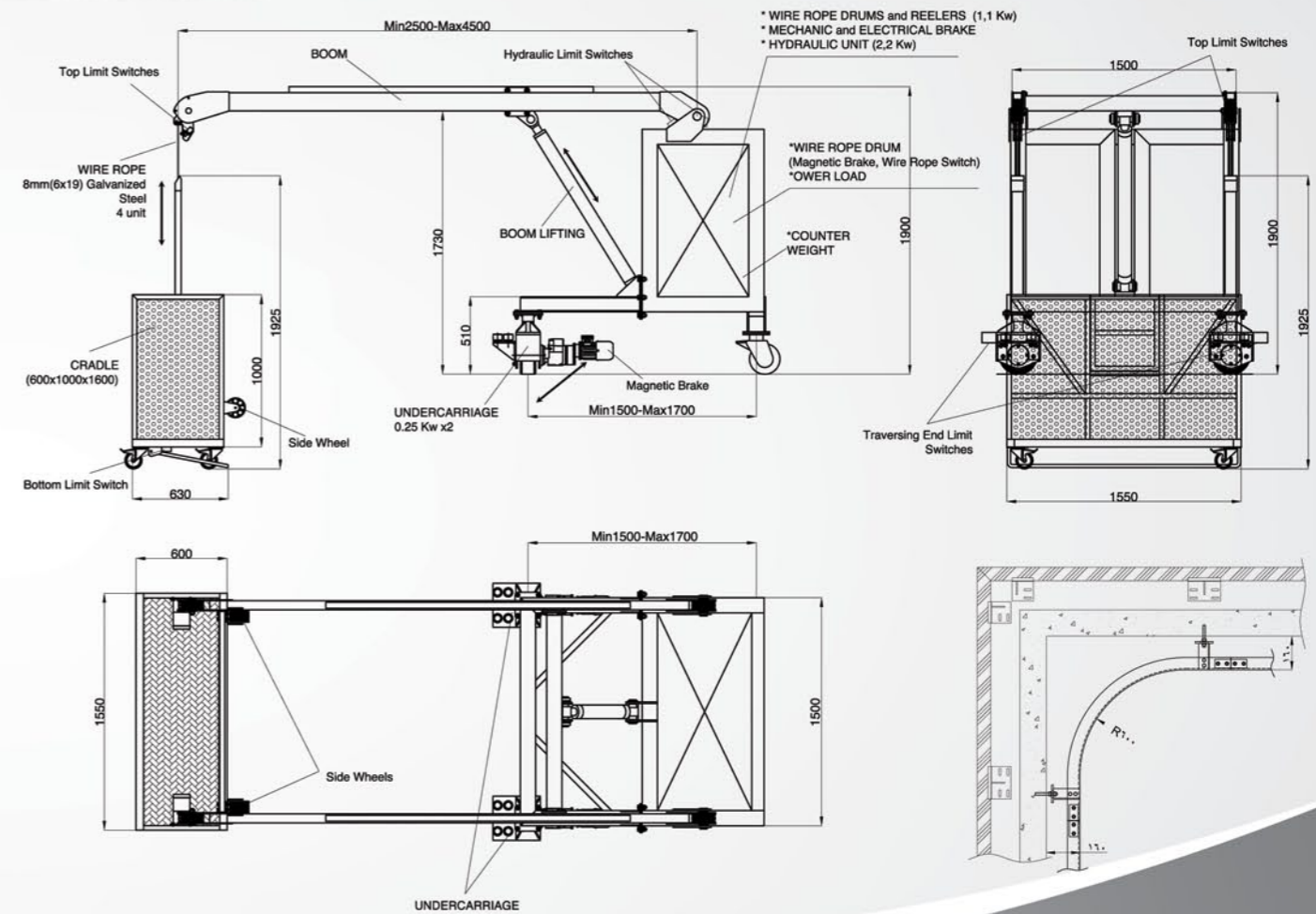
- It is a façade cleaning system moving horizontally over aluminum mono rail installed at the exterior side of the building.
- Horizontal movement can be performed both manually and automatically.
- Vertical movement is performed by means of electrical powered engine with gear reducers located in cradle.
- Operator can control horizontal and vertical movements from the control panel inside the cradle.

- Mono rails are specially manufactured and mounted according to buildings' façade length and shape.
- Mono rail can be mounted to front side of the facade, inside parapet or under the eaves by mono rail holders.
- Mono rail is natural aluminum colored.

### Machinery Features

Power	: 3,2 kW
Wire Rope	: 4 units of 8 mm 6x19 Galvanized
Voltage	: 380 V
Control	: Cable
Vertical Movement	: 12 cm/sec    2 units 1,1 kW
Horizontal Movement	: 6 cm/sec    2 units 0,25 kW
Weight	: 400 kg
Rail	: Aluminum 6060 T56 Series (7 kg/m)
Working Capacity	: 120 Kg / 240 Kg





( ROOF CAR )  
SERIES FACADE CLEANING SYSTEM

Light type façade cleaning system with double boom.

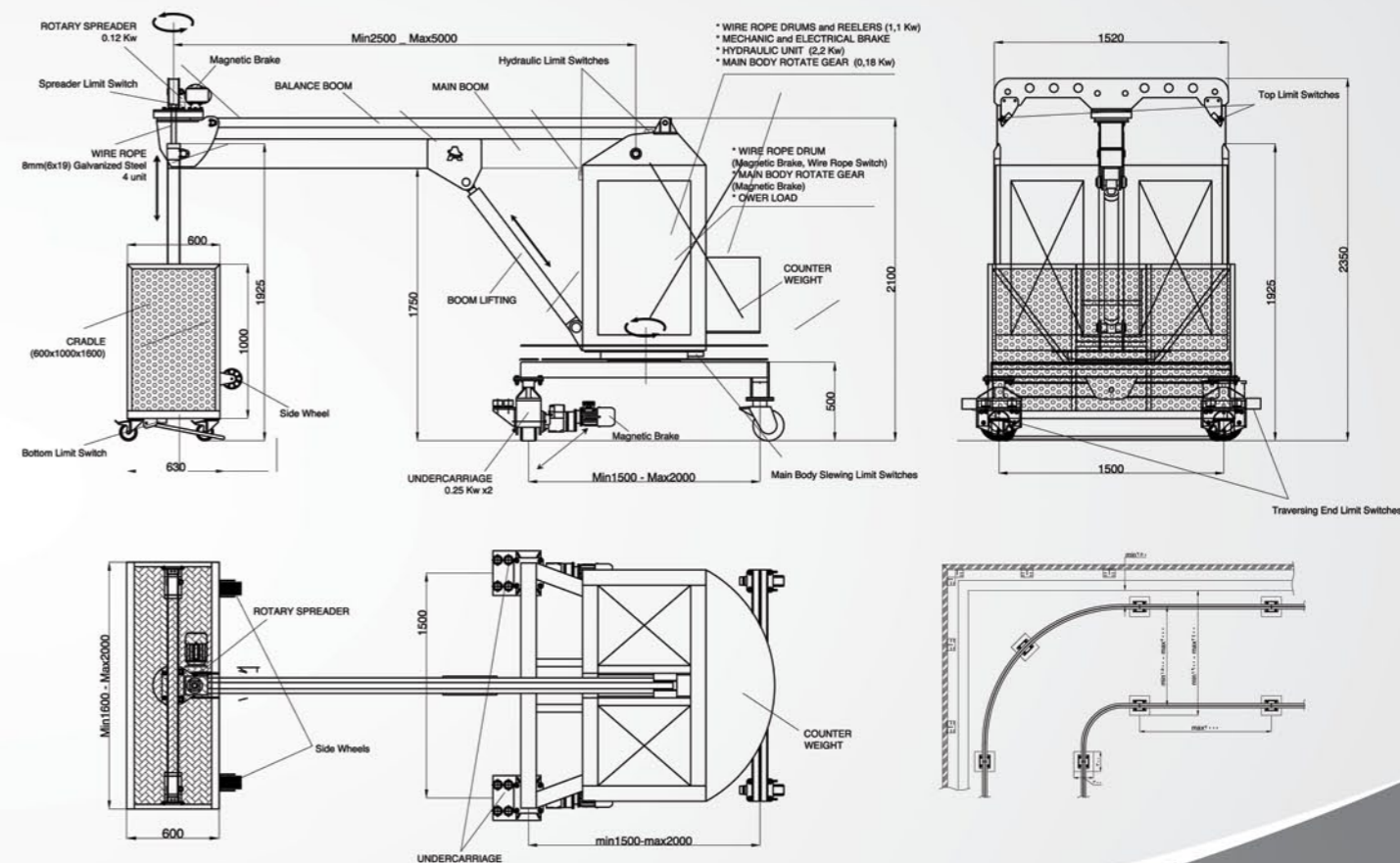
- Double boom up to 5 meter length according to façade of the building.
- Horizontal movement can be performed on rail tracks and concrete runway.
- Distance of the cradle from the façade can be adjusted and the cradle is able to be parked on terrace floor by means of hydraulic lift.
- On demand Phoneix Contact brand 128 bit wireless control can be installed.
- Roof car series are preferred for the buildings up to 60 meters height.
- Siemens, Schneider and Moeller brand electronical automation equipments are used.
- Double safety suspension line, block stop safety system, wire rope tension controller and overspeed breaking system are available.
- Bottom and top limit switches, rail end switches provide maximum safety.
- EN 1808 compliance with CE certificate.



**Machinery Features**

Power	: 3,8 kW
Wire Rope	: 4 units of 8 mm 6x19 Galvanized
Voltage	: 380 V
Control	: Cable / 128 bit wireless
Vertical Movement	: 12 cm/sec      1 units 1,1 kW
Horizontal Movement	: 6 cm/sec      2 units 0,25 kW
Hydraulic Lift	: 10 cm/sec      1 units 2,2 kW
Weight	: 1500 +.....kg (according to boom length)
Rail Axis	: 1700 / 1500 / 1300 mm
Working Capacity	: 240 Kg
Runs on	: Concrete Runway / Rail (160 ,140 mm NPI Galvanized)





## SERIES FACADE CLEANING SYSTEM

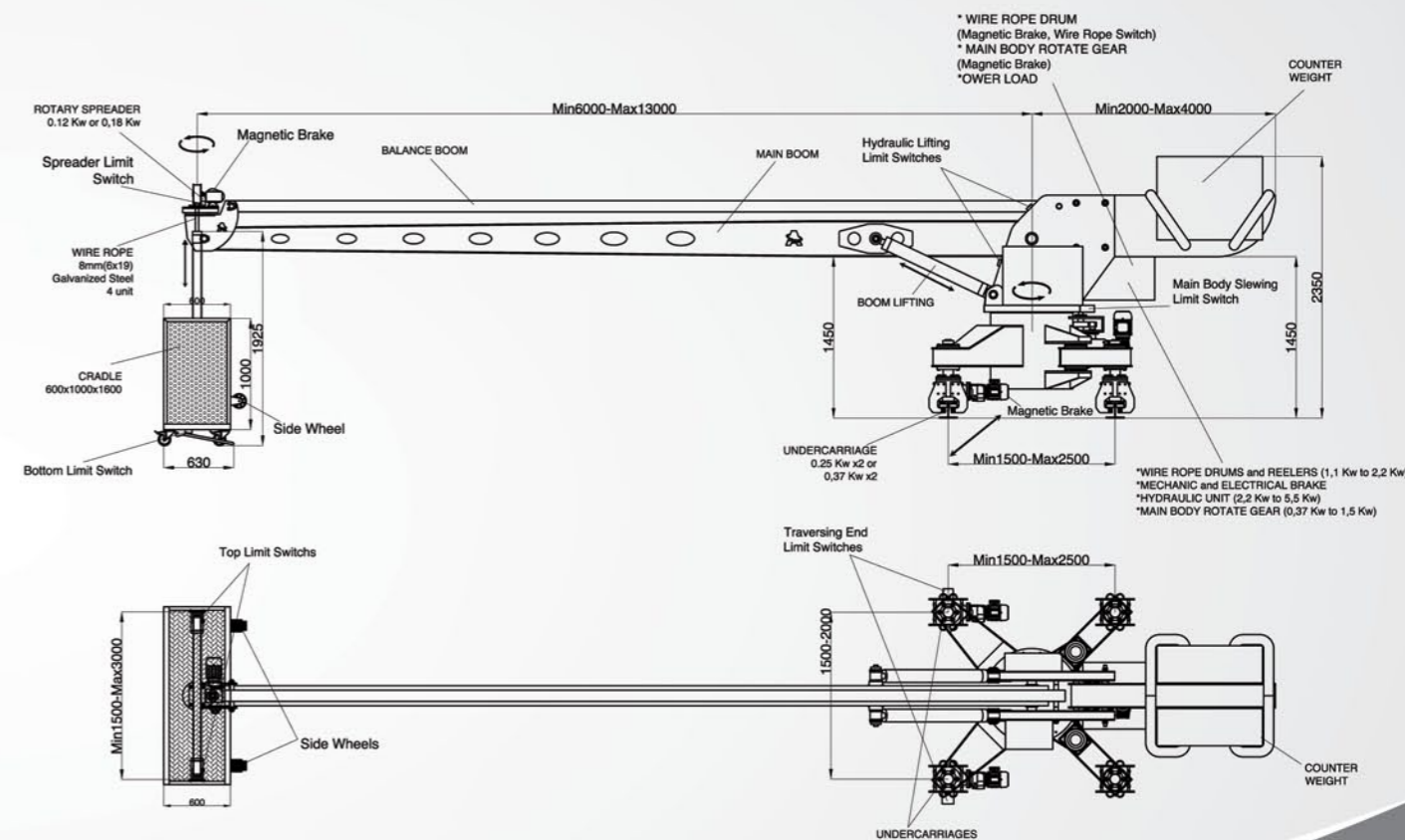
- Light type façade cleaning system with single boom
- Single boom between 2,5 to 5 meters length according to façade of the building.
- Horizontal movement can be performed on rail tracks and concrete runway.
- The distance of the cradle from the façade can be adjusted and the cradle is able to be parked on terrace floor by means of hydraulic lift.
- Rotary spreader mounted at the end of the boom provides easy access to corners and the edges of the building. Rotary spreader has capability of 270° slewing.
- Slewing of the main body provides easier access to the desired points all over the façade of the building.

- On demand Phoneix Contact brand 128 bit wireless control can be installed.
- Siemens, Schneider and Moeller brand electrical automation equipments are used.
- Double safety suspension line, block stop safety system, wire rope tension controller and overspeed breaking system are available.
- Bottom and top limit switches, rail end switches provide maximum safety.
- EN 1808 compliance with CE certificate

### Machinery Features

Power	: 5,5 kW
Wire Rope	: 4 units of 8 mm 6x19 Galvanized
Voltage	: 380 V
Control	: Cable / 128 bit wireless
Vertical Movement	: 12 cm/sec 1 units 1,5 kW
Horizontal Movement	: 6 cm/sec 2 units 0,25 kW
Hydraulic Lift	: 10 cm/sec 1 unit 3 kW
Main Body Slewing	: 10 cm/sec 1 unit 0,37 kW
Rotary Spreader Slewing	: 10 cm/sec 1 unit 0,12 kW
Weight	: 2500 + ..... kg (according to boom length)
Rail Axis	: 1700 / 1500 / 1300 mm
Working Capacity	: 240 Kg
Runs on	: Concrete Runway / Rail (160 ,140 mm NPI / HEA galvanized)





## ( TELESCOPIC ) SERIES FACADE CLEANING SYSTEM

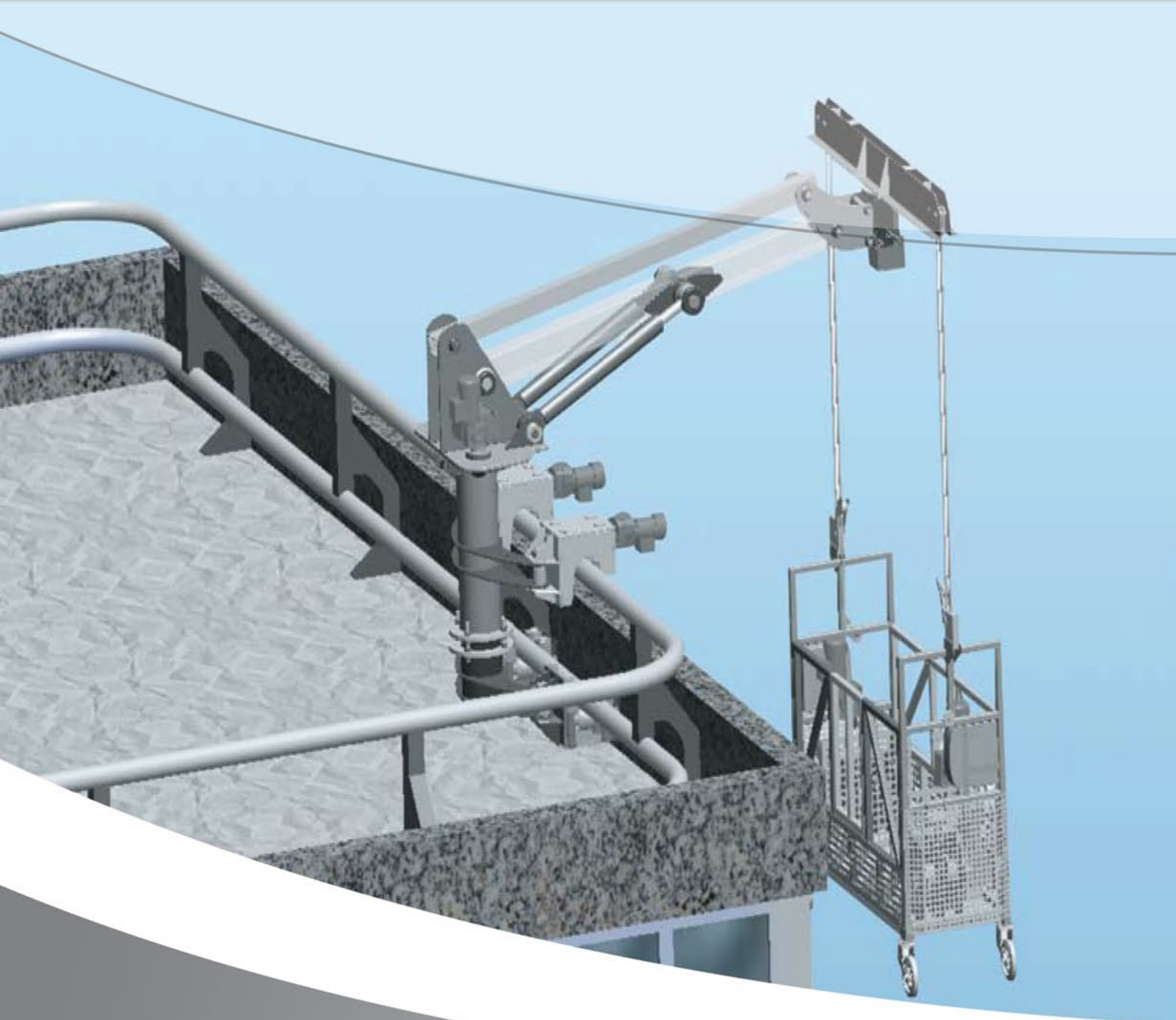
- Heavy type façade cleaning system with single boom and hydraulic lift
- Single boom between 5 to 12 meters length according to façade of the building.
- Telescopic series are preferred for the buildings up to 200 meters height.
- Main body can be raised in order to clear parapet or other obstacles.
- Horizontal movement can be performed on double rail tracks.
- The distance of the cradle from the façade can be adjusted and the cradle is able to be parked on terrace floor by means of hydraulic lift.

- Rotary spreader mounted at the end of the boom provides easy access to corners and the edges of the building. Rotary spreader has capability of 270° slewing.
- Slewing of the main body provides easier access to desired points all over the façade of the building.
  - On demand Phoneix Contact brand 128 bit wireless control can be installed.
  - Siemens, Schneider and Moeller brand electronically automation equipments are used.
  - Double safety suspension lines, block stop safety system, wire rope tension controller and overspeed breaking system are available.
  - Bottom collision sensing bar, top limit switches and rail end switches provide maximum safety.

### Machinery Features

Power	: 10 kW
Wire Rope	: 4 units of 8 mm 6x19 Galvanized
Voltage	: 380 V
Control	: Cable / 128 bit wireless
Vertical Movement	: 12 cm/sec    2 units 1,5 kW
Horizontal Movement	: 6 cm/sec    2 units 0,25 kW
Hydraulic Lift	: 10 cm/sec    1 units 5,5 kW
Main Body Slewing	: 10 cm/sec    1 units 0,50 kW
Rotary Spreader Slewing	: 10 cm/sec    2 units 0,25 kW
Weight	: 4000 + .....kg (according to boom length)
Rail Axis	: 2.500 / 2.000 / 1.700 / 1.500 mm
Working Capacity	: 240 Kg
Runs on	: Rail (200 ,180 ,160 ,140 mm NPI / HEA galvanized)



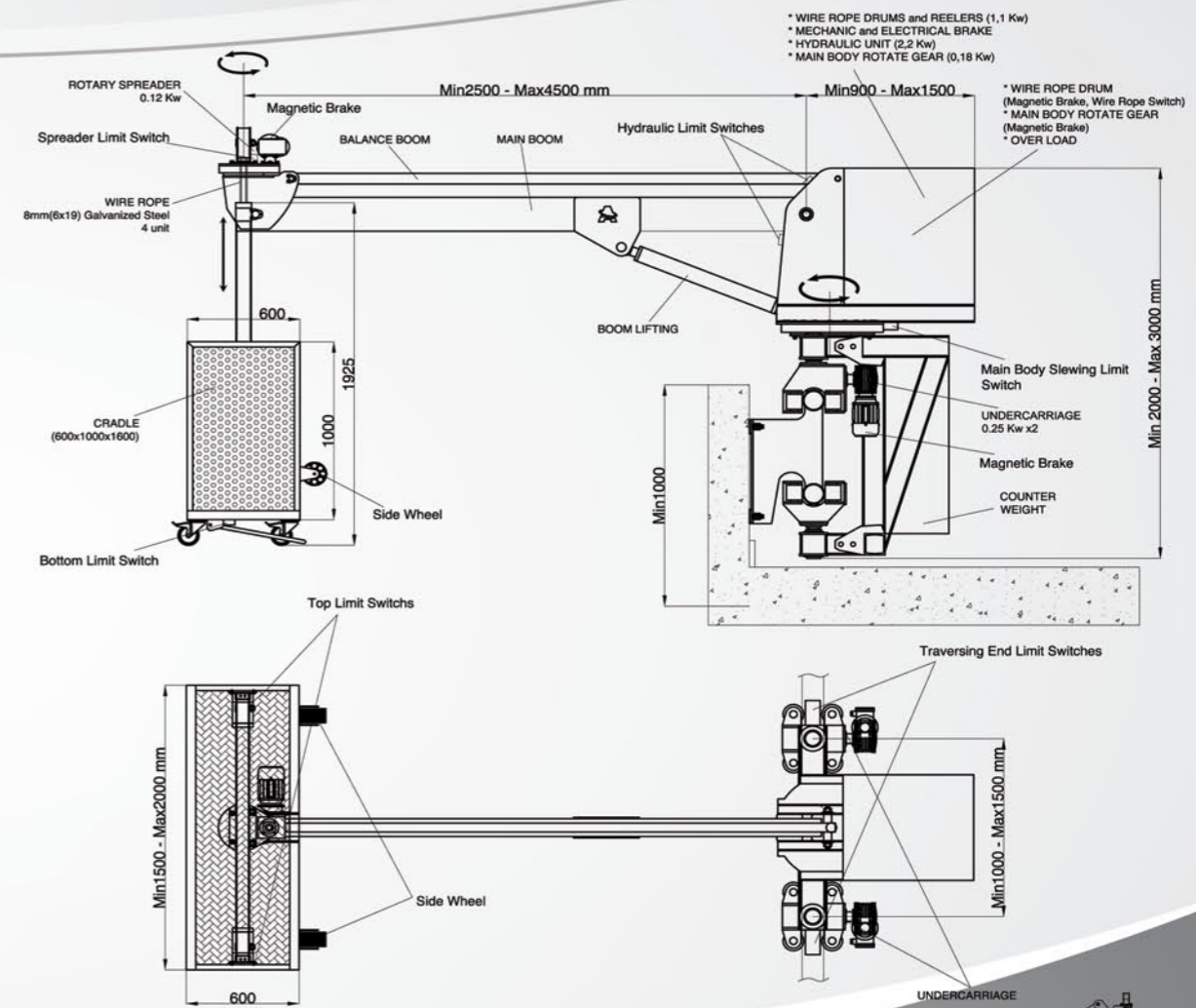


( PARAPET MOUNTED )  
**SERIES FACADE CLEANING SYSTEM**

Façade cleaning system runs on special double rail track mounted to interior side of parapet.

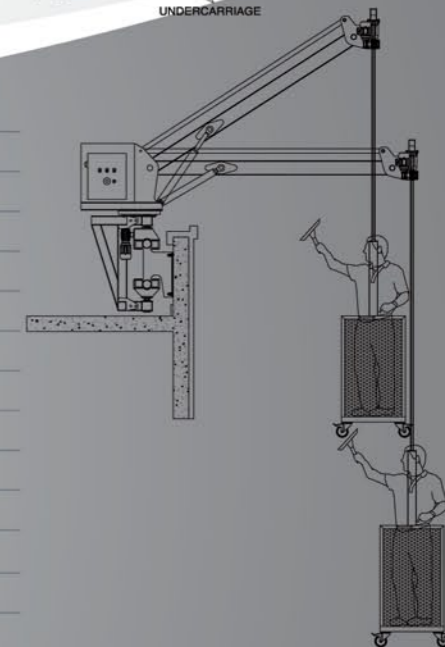
- Single boom between 2,5 to 4,5 meters length according to facade of the building.
- This system is preferred for the buildings have strong parapet structure and limited area.
- The distance of the cradle from the façade can be adjusted and the cradle is able to be parked on terrace floor by means of hydraulic lift.
- Rotary spreader mounted at the end of the boom provides easy access to corners and the edges of the building. Rotary spreader has capability of 270° slewing.

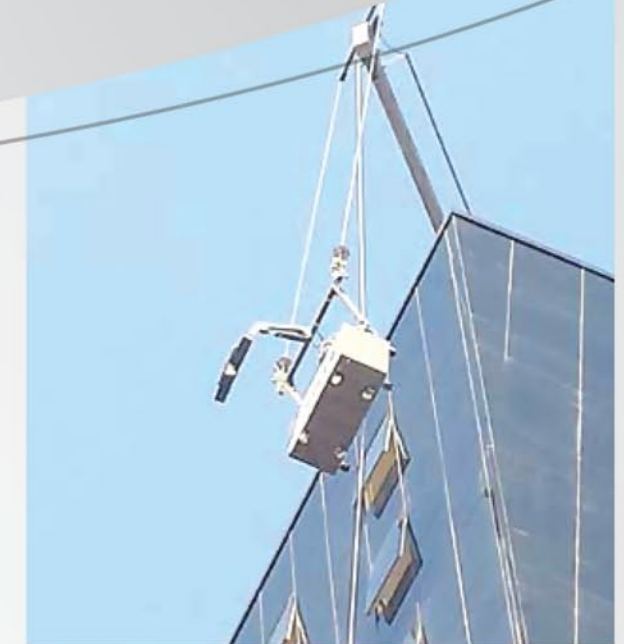
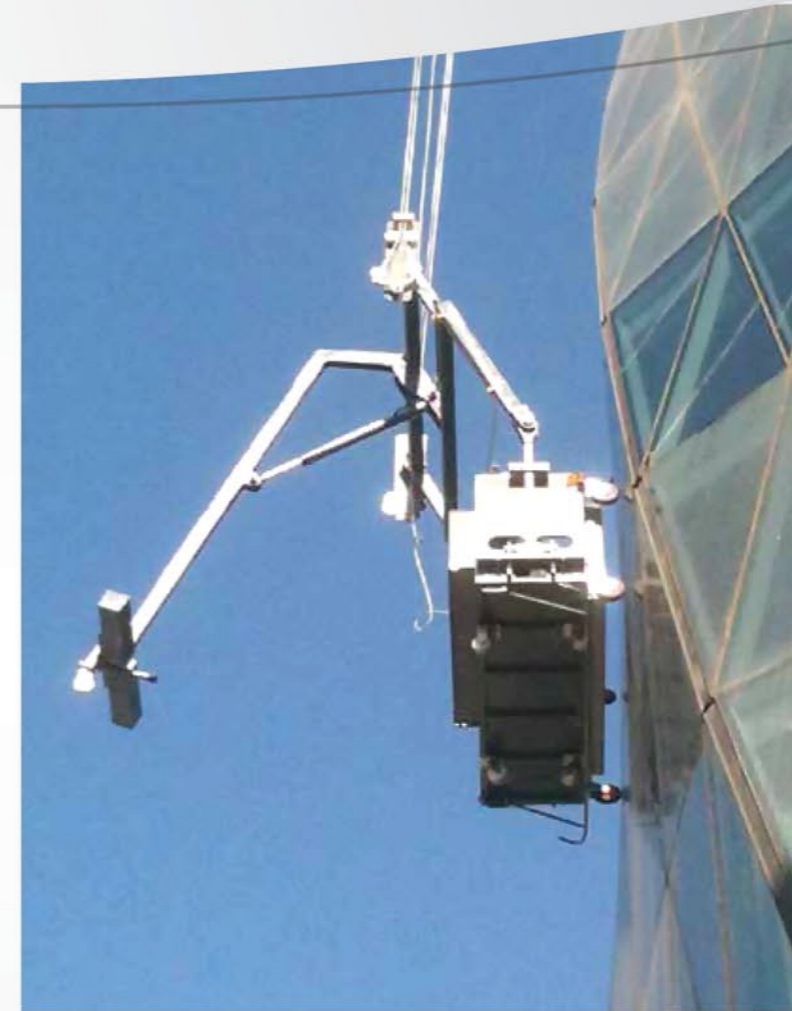
- Slewing of the main body provides easier access to the desired points all over the façade of the building.
- On demand Phoneix Contact brand 128 bit wireless control can be installed.
- Siemens, Schneider and Moeller brand electronically automation equipments are used.
- Double safety suspension lines, block stop safety system, wire rope tension controller and overspeed breaking system are available.
- Bottom collision sensing bar, top limit switches and rail end switches provide maximum safety.



**Machinery Features**

Power	: 4,7 kW
Wire Rope	: 4 units of 8 mm 6x19 Galvanized
Voltage	: 380 V
Control	: Cable / 128 bit wireless
Vertical Movement	: 12 cm/sec 1 units 1,5 kW
Horizontal Movement	: 6 cm/ sec 2 units 0,25 kW
Hydraulic Lift	: 10 cm/ sec 1 units 2,2 kW
Main Body Slewing	: 10 cm/ sec 1 units 0,37 kW
Rotary Spreader Slewing	: 10cm/ sec 1 units 0,12 kW
Weight	: 1500 + .....kg (according to boom length)
Rail Axis	: 900 / 700 mm
Working Capacity	: 240 Kg
Runs on	: Rail (114 ,90 mm steel pipe, galvanized)

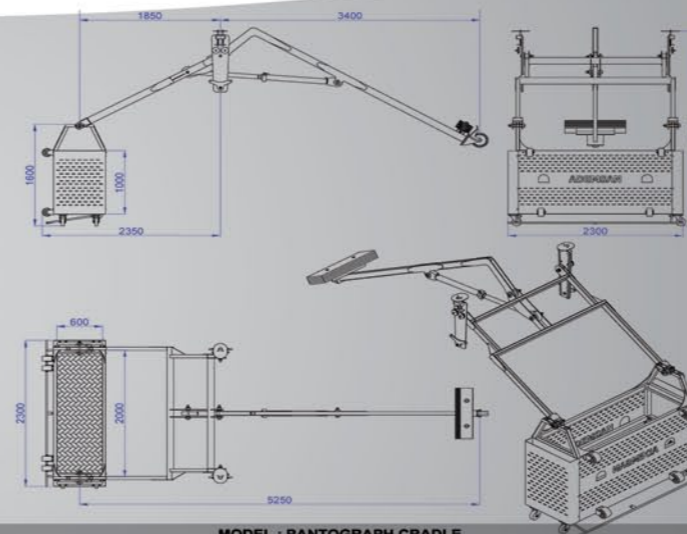




(PANTOGRAPH)  
SERIES OPENABLE SCISSORED  
TYPE, DOUBLE PERSON WORKING PLATFORM

- Platform used when necessary to reach under the eaves/ under eaves.
- Optionally scissors type forward openable 1,2,3 m platform.
- Movement of opening is performed within the platform via manual hydraulic piston.
- Two person working platform, no lift system upon it.
- Used only with terrace units.
- With 200x60x100 cm dimensions used within all general purpose works.
- Main grider/body system is made up of steel, platform up from aluminium material.

- 2 Pieces of carrying wire ropes and 2 units of security wire ropes are available.
- 240 kg load capacity (custom made and upon request load capacity can vary).
- Security wire ropes and safety locks allows safe working environment.
- Over load sensor, Lower collision bar, Upper and Lower limit switches prevents operator errors.
- Manufacturing and assembly is in accordance within EN 1808 standards and norms



MODEL : PANTOGRAPH CRADLE

FEATURES	
Used with	AST 40, AST 45, AST 50, AST 60, AST 70 systems
Wire Rope	4 Pieces 8 mm Wire Rope
Voltage	24 V
Control	E-Cable / Cable
Vertical Movement	8 m /min (in accordance with main machine)
Horizontal Movement	4 m /min (in accordance with main machine)
Outward Opening Distance	1,2,3 m outward /forward openable (optional...as per request)
Open Movement	Manual Powered Hydraulic Piston
Platform Weight	150 kg .... (differs in accordance with building height)
Working Capacity	240 Kg





### FAÇADE CLEANING MACHINE WITH ANCHORAGE ARM SUSPENSION SYSTEM

- Steel anchorage arms are mounted to the arm bases which are anchored on terrace floor or inside of the parapet.
- Steel anchorage arms are fixed to arm bases with steel pins. These arms hold the working platform by 8mm 6x19 galvanized wire ropes.
- Vertical movement is performed by two electrical engines with reduction gears mounted on the working platform.
- Horizontal movement is done manually by fixing anchorage arms to other arm bases.
- Siemens, Schneider and Moeller brand electronically automation equipments are used.
- Double safety suspension lines, block stop safety system are available.
- Bottom collision sensing bar and top limit switches provide maximum safety.
- EN 1808 compliance with CE certificate

#### Machinery Features

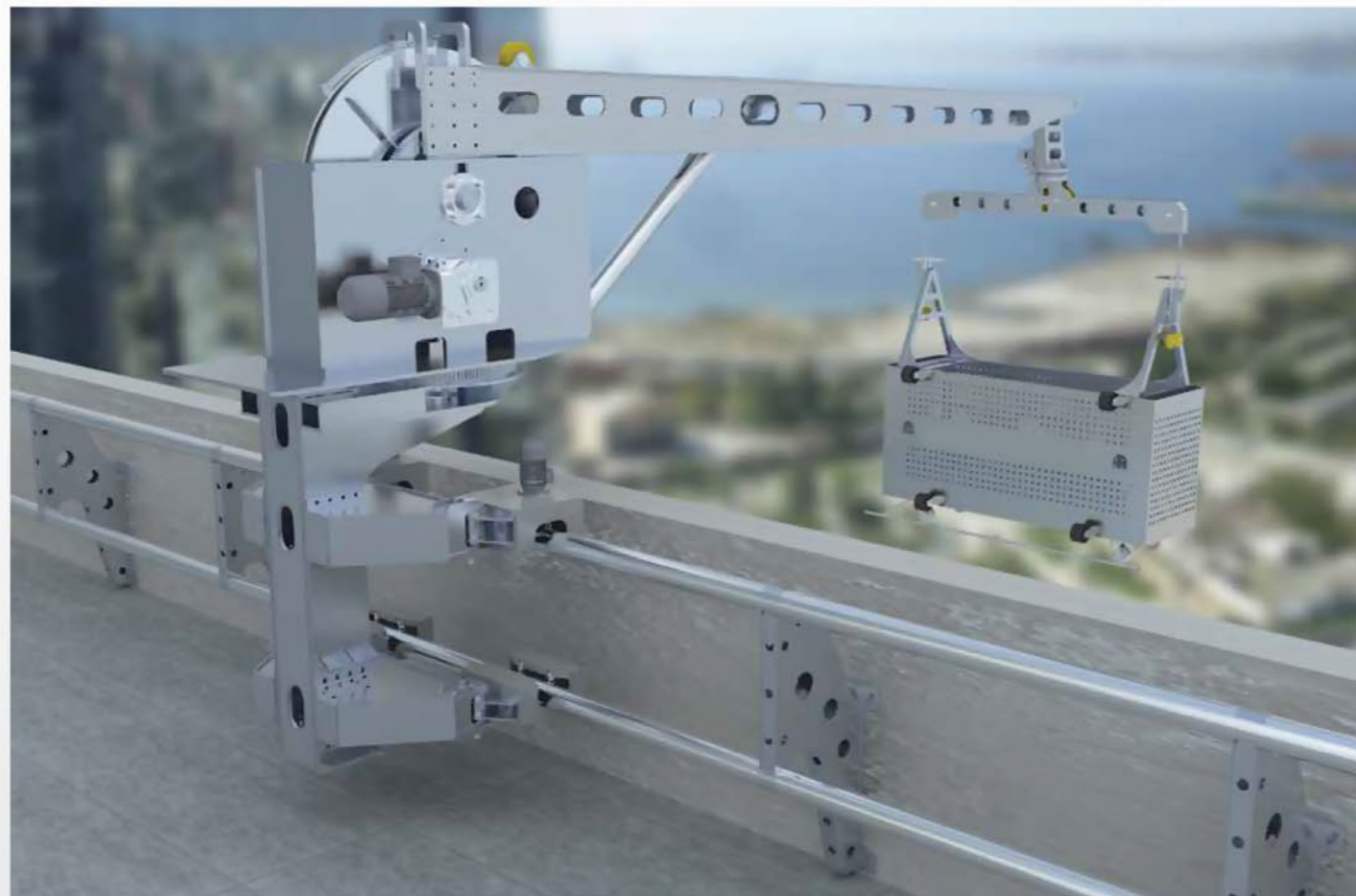
Power	: 2,7 kW
Wire Rope	: 4 units of 8 mm 6x19 Galvanized
Voltage	: 380 V
Control	: Cable
Vertical Movement	: 12 cm/sec      2 units 1,1 kW
Horizontal Movement	: Manual
Weight	: 500 / 300 kg
Working Capacity	: 240 / 120 Kg

### FAÇADE CLEANING MACHINE WITH ANCHORAGE ARM SUSPENSION SYSTEM

- Steel anchorage arms are mounted to the arm bases which are anchored on terrace floor or inside of the parapet.
- Steel anchorage arms are fixed to arm bases with steel pins. These arms hold the working platform by 8mm 6x19 galvanized wire ropes.
- Vertical movement is performed by two electrical engines with reduction gears mounted on the working platform.
- Horizontal movement is done manually by fixing anchorage arms to other arm bases.
- Siemens, Schneider and Moeller brand electronically automation equipments are used.
- Double safety suspension lines, block stop safety system are available.
- Bottom collision sensing bar and top limit switches provide maximum safety.
- EN 1808 compliance with CE certificate

#### Machinery Features

Power	: 2,7 kW
Wire Rope	: 4 units of 8 mm 6x19 Galvanized
Voltage	: 380 V
Control	: Cable
Vertical Movement	: 12 cm/sec      2 units 1,1 kW
Horizontal Movement	: Manual
Weight	: 500 / 300 kg
Working Capacity	: 240 / 120 Kg



## SERIES TWO PERSON HOISTED WORKING PLATFORM

- Constructed upon AST 10 Two Person Cardle.
- Used when in reach for the verges / canopy indents.
- Engine system 1m outward openeable /1 m inclines
- Used with Counterweight, Davit Arm, Monorail and terrace units .
- Platform with double hoist and wire rope reeler.
- With 200x60x100 cm dimensions used within all general purpose works.
- 2 Pieces of carrying wire ropes and 2 units of security wire ropes are available.
- 240 kg lod capacity (custom made and upon request load capacity can vary ).
- Security wire ropes and safety locks allows safe working environment.
- Over load sensor, Lower collision bar, Upper and Lower limit switches prevents operator errors.
- Manufacturing and assembly is in accordance within EN 1808 standards and norms

# BUILDING MAINTENANCE UNITS



## FACADE CLEANING SYSTEMS



Kingdom of Saudi Arabia  
Telfax : +966 11 2702327  
[www.abc-e.org](http://www.abc-e.org)  
[info@abc-e.org](mailto:info@abc-e.org)

**abc**  
ADVANCED  
BUILDING CARE