

ABC
ADVANCED BUILDING CARE

COMPANY PROFILE

Index:

	<u>PAGE NO.</u>
1. INTRODUCTION -----	3
2. MISSION STATEMENT -----	4
3. ABC & CLASSIC -----	4
4. THE MANAGEMENT TEAM -----	5
5. INTRODUCTION TO OUR PRODUCTS AND SERVICES -----	6
5.1. SALES & DESIGN -----	6
5.1.1. BUILDING MAINTENANCE UNIT SYSTEMS (BMU) ---	6
5.1.1.1. BMU SYSTEM TYPES -----	8
5.1.1.1.1. AST 30 MONORAIL SYSTEM -----	8
5.1.1.1.2. AST 40 FACADE CLEANING SYSTEM -----	9
5.1.1.1.3. AST 45 FACADE CLEANING SYSTEM -----	10
5.1.1.1.4. AST 50 FACADE CLEANING SYSTEM -----	11
5.1.1.1.5. AST 60 FACADE CLEANING SYSTEM -----	12
5.1.1.1.6. AST 70 FACADE CLEANING SYSTEM -----	13
5.1.2. TEMOPRRARY SUSPENDED PLATFORMS (Cradles) ----	14
5.1.3. GLASS HANDLING & LIFTING EQUIPMENTS -----	15
5.1.4. ACCESS EQUIPMENTS -----	16
5.1.5. INDUSTIRAL CNC MACHINERY -----	17
5.1.5.1. CNC ROUTER MACHINE -----	17
5.1.5.2. CNC PLASMA CUTTING MACHINE -----	18
5.1.5.3. CNC LASER CUTTING MACHINE -----	18
5.1.5.4. NC & CNC HYDRULIC PRESSBRAKE MACHINES --	19

5.1.5.5. NC & CNC GUILLITON SHEAR MACHINES -----	19
5.2. RENTAL -----	20
5.3. SERVICES -----	20
6. OUR PRODUCTS AND SERVICES ARE READY FOR MARKET ---	21
7. THE IMPORTANCE OF QUALITY PRODUCTS -----	21
8. COMPLETED PROJECTS -----	22
8.1. PROJECTS IN GCC -----	22
8.2. PROJECTS WORLDWIDE -----	25

1. INTRODUCTION

ABC has started in January of 2012 by a Staff of professionals to supply and hire a lifting equipments and industrial machineries to Saudi market.

ABC aims at continuing developing its range of products and improves more sales around the Kingdom of Saudi. We also aim to start manufacturing some lifting equipment's in the KSA.

Incepted in the year 2012, Advanced Buildings Care is one of the leading developers and suppliers of access construction machinery, BMU Systems and CNC machines. Our wide ranges of equipment are widely demanded in the local area and we have been supplying to our clients in Central region, Western region, Eastern region and across the Kingdom markets. With the tremendous support of our efficient quality analysis department, Research & Development department and standard equipment, our products provide us an edge over others in the allied industry. Our state- of -the- art infrastructure assists us to offer wide range of solutions. Executing honesty and integrity in all processes, we have a highly satisfied customer base.

Why Us?

Few of the factors that make us the first choice ahead of our competitors are:

- Customized Solutions.
- Stringent Quality Checks.
- Innovation through Research & Development.
- Reliable Products.
- Delivery With In Stipulated Frame of Time.

2. MISSION STATEMENT

ABC is dedicated to supply our clients with safe, high-quality products and services; support our clients with superior training enabling them to operate to the highest safety standards in the industry.

Encourage our employees to perform to their maximum standards of performance, dedication and integrity. Offer our customers a superior and reliable product selection of cradles, BMU, as well as other lifting and loading equipment's for rent or sale, with service unmatched in the industry.

3. ABC & CLASSIC

In one year & half of operation, ABC has succeeded in placing a solid name as a major cradles supplier in the KSA. Accordingly, we have expended the use of the name into our division.

At the very start of our operation in the beginning of 2012, we have started developing the cradles and introduced a new brand name called: CLASSIC.

The unique name of our cradles has become well known to the users around the region for its quality which enhanced the respect of ABC name in the market and accordingly the recognition of the brand.

4. THE MANAGEMENT TEAM

ABC prides itself on a solid record of performance in delivering high quality products and services in the lifting industry in a manner consistent with each client's pragmatic concerns. In cradles only, ABC rent big quantity of cradles now.

ABC have succeeded in attracting well balanced and experience managers and staff to join hands in the development of the company.

5. INTRODUCTION TO OUR PRODUCTS AND SERVICES

The current operation of ABC is divided between its subsidiaries, but it can be summarized into three categories: **Sales & Design, Rental and Services.**

5.1. SALES & DESIGN

5.1.1. BUILDING MAINTENANCE UNIT SYSTEMS (BMU)

ABC leading as supply, design, installation of **Building Maintenance Units** in Saudi Market, we are a joint venture company with a Turkish Co **ADEMSAN MACHINERY Co** specialist on design & Manufacturing of the BMU systems all on **EURO STANDARDS EN1808.**

ABC provides sales, assembly, maintenance and repair services in addition to manufacturing the product range of Building Maintenance Units & Electrical Suspended Scaffoldings.

ABC supply special designed machines and platforms along with the standard products by using modern machines such as CNC process, CNC laser according to customer demands.

ABC has a multidisciplinary quality control concept. All parts of the machines are checked through strict controls and tests in all stages of production.

ABC serves its customers with a professional technical staff, continuing improvement and innovative concept and a wide capacity of machinery.

ABC succeeded considerable projects with its customer satisfaction and quality focused operation style.

The supply of the BMU involves the following:

- Recommendations for the requirements of each building.
- Design, sourcing, delivery.
- Installation and maintenance

We offer Building maintenance unit (BMU), also is a kind of suspended access equipment's intended to be permanently installed and dedicated to a specific building or structure for cleaning and maintaining windows or exterior walls for high building. Every building differs from each other in both shape and surface, so Building maintenance unit shall be designed and manufactured according to the specific situation of building.

BMU consists of a platform suspended from a suspension rig which is generally a trolley unit with hoist operating either on rails or on a suitable surface, e.g. concrete track Monorails with traversing trolleys or other suspension rigs e.g. davits fixed to the building from which a platform may be suspended. All are considered as parts of a BMU. According to the different power device, building maintenance unit is classified into climber type system and winch type system.

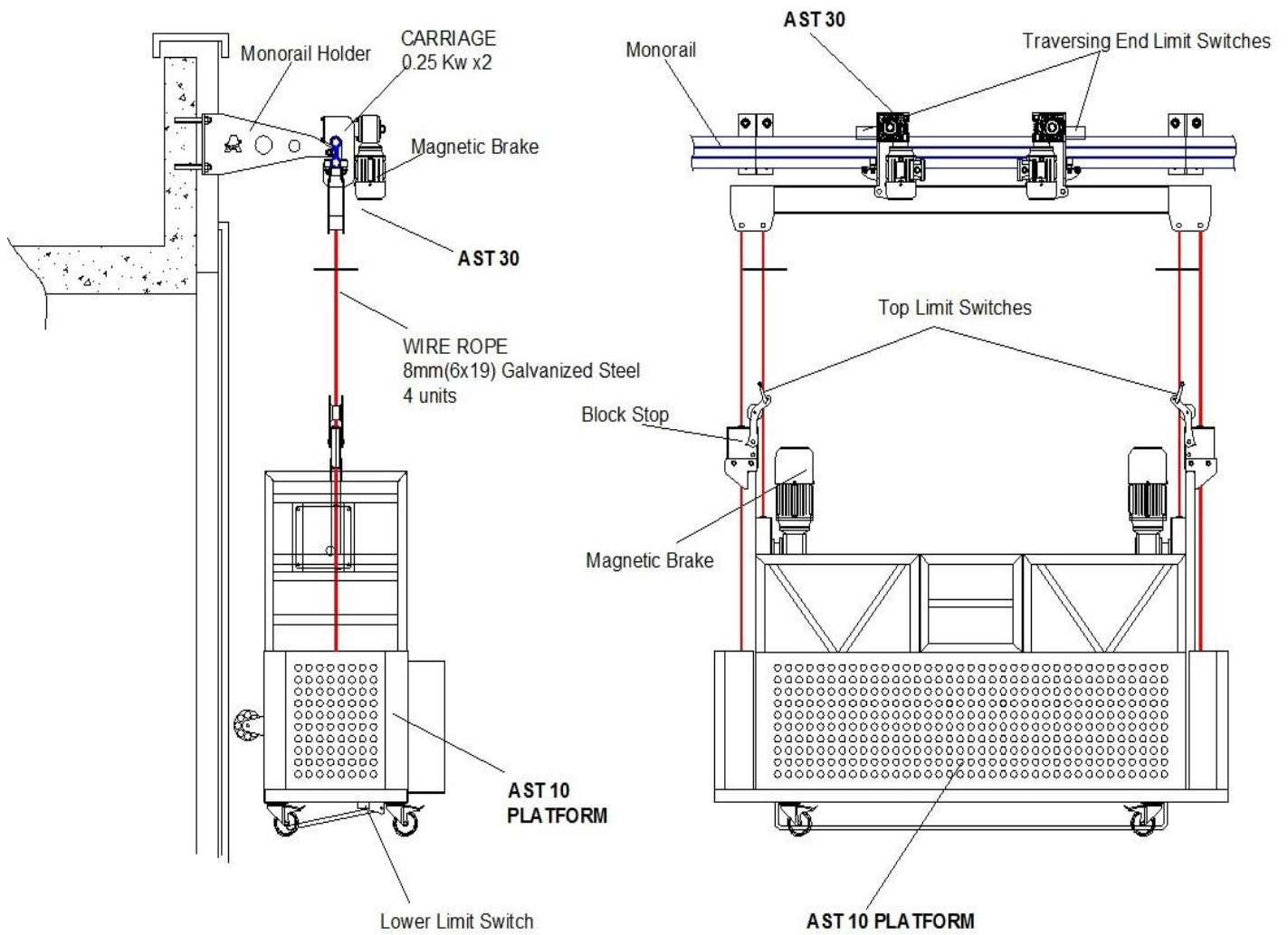
The power device for the climber type is installed on the suspended platform.

The winch type is powered by the winch device installed in trolley on the floor.



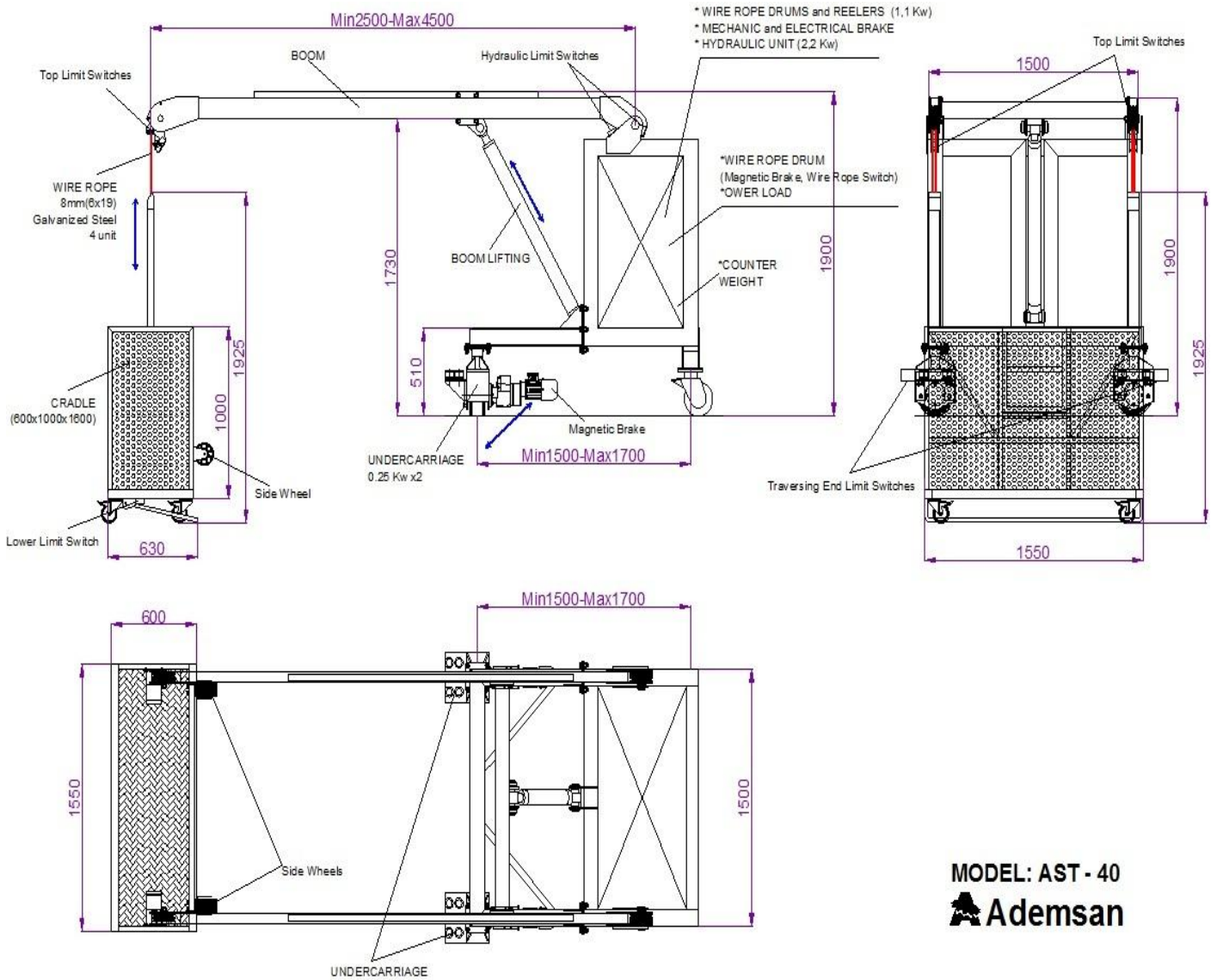
5.1.1.1 BMU SYSTEM TYPES

5.1.1.1.1. AST30 MONORAIL SYSTEM

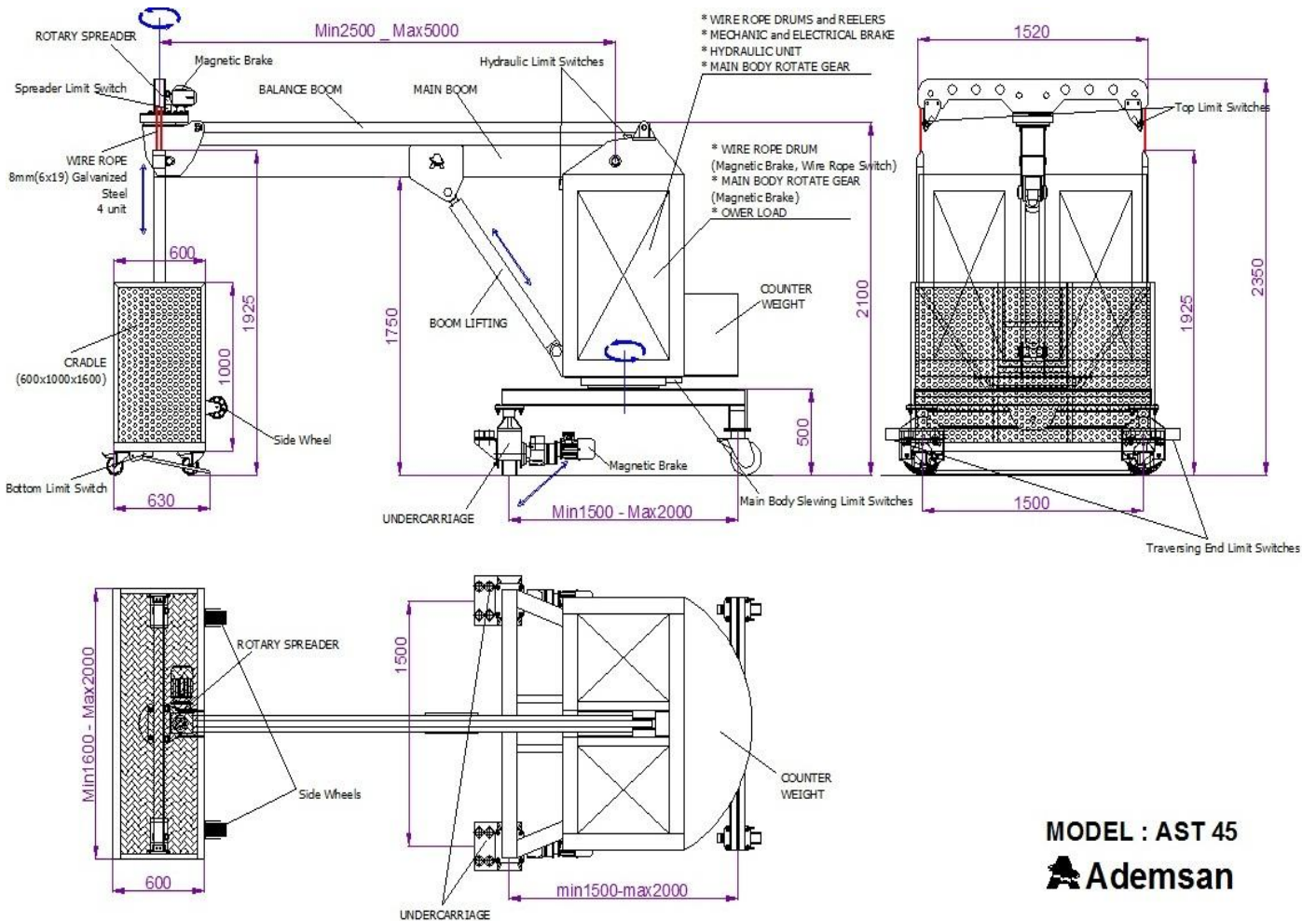


MODEL : A ST 30
Ademsan

5.1.1.1.2. AST 40 FACADE CLEANING SYSTEM

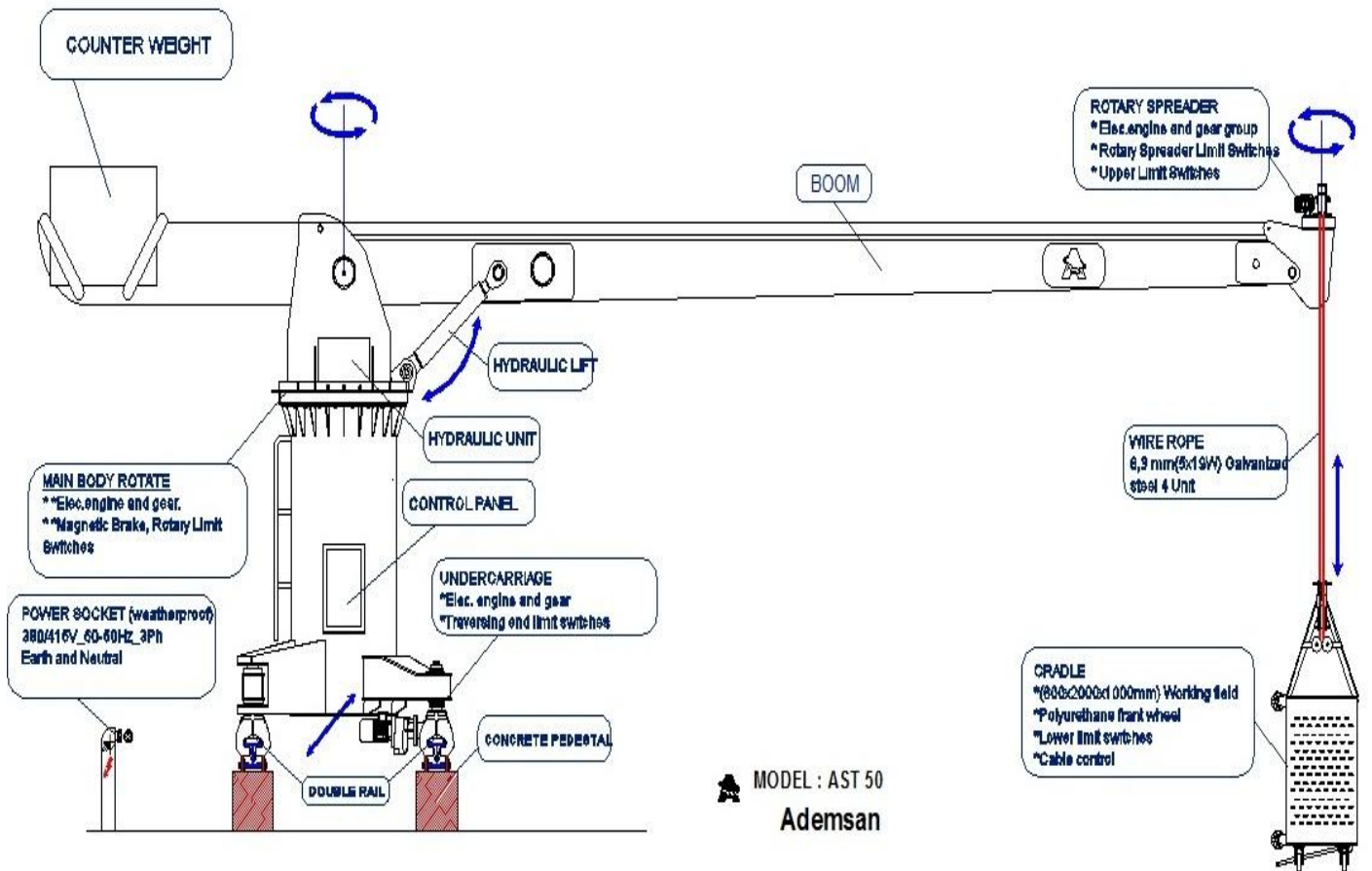


5.1.1.1.3. AST45 FACADE CLEANING SYSTEM

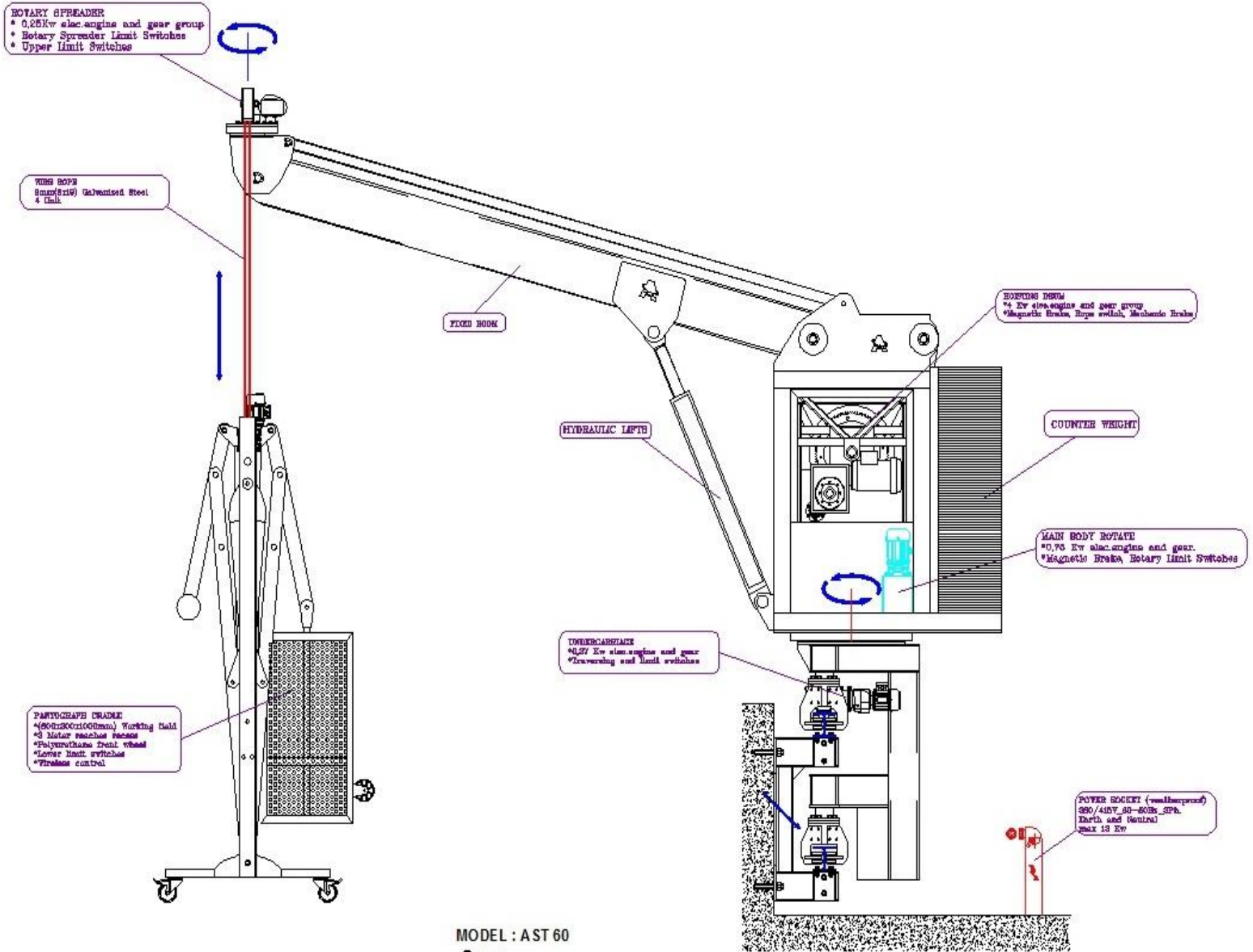


MODEL : AST 45
 Ademsan

5.1.1.1.4. AST 50 FACADE CLEANING SYSTEM

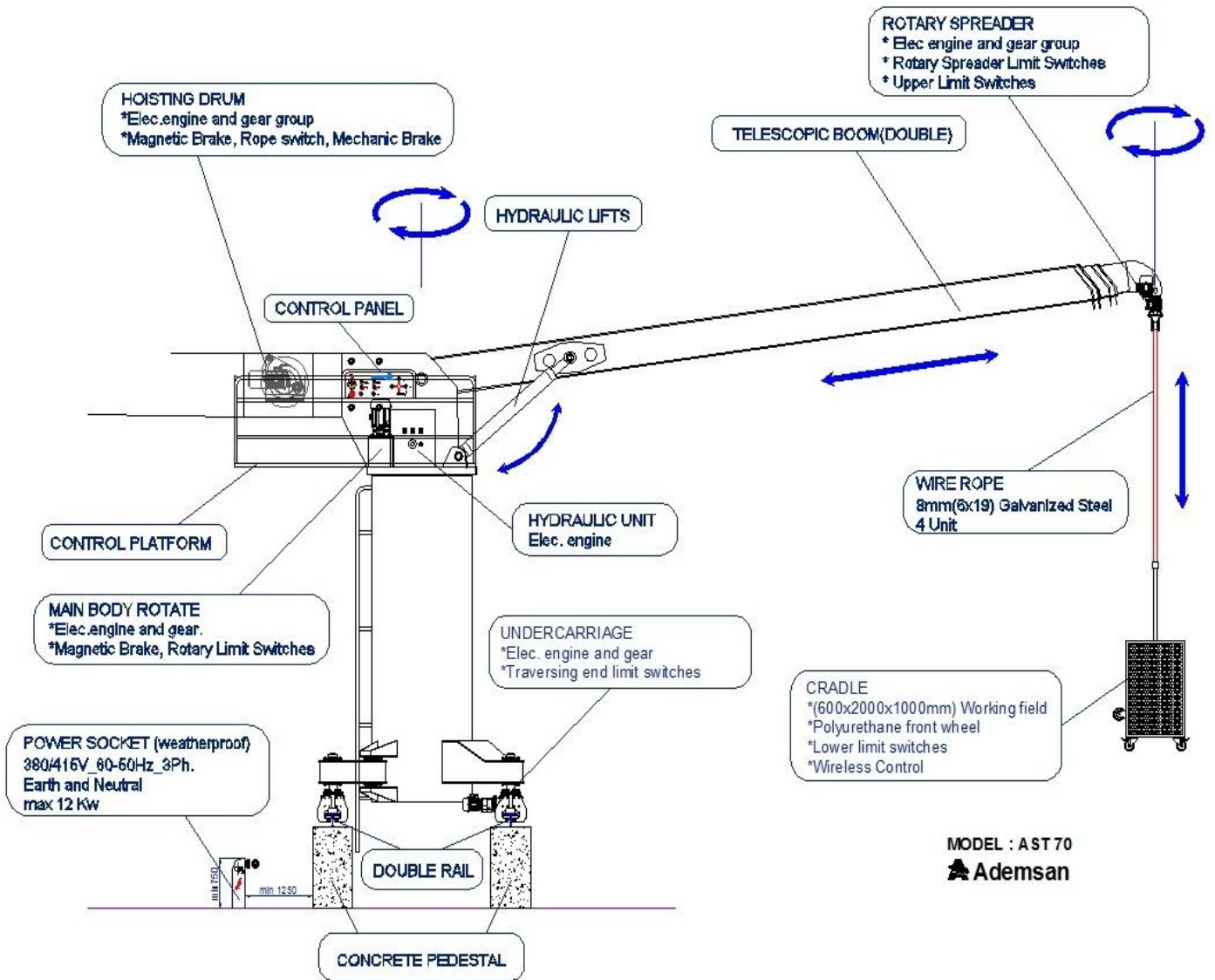


5.1.1.1.5. AST60 FACADE CLEANING SYSTEM



MODEL : AST 60
Ademsan

5.1.1.1.6. AST 70 FACADE CLEANING SYSTEM



5.1.2. Temporary Suspended Platforms (Cradles)

We have started ABC with selling CLASSIC cradles, developed by our team and manufactured exclusively for ABC **with special specification and European electrical components from Schneider.**

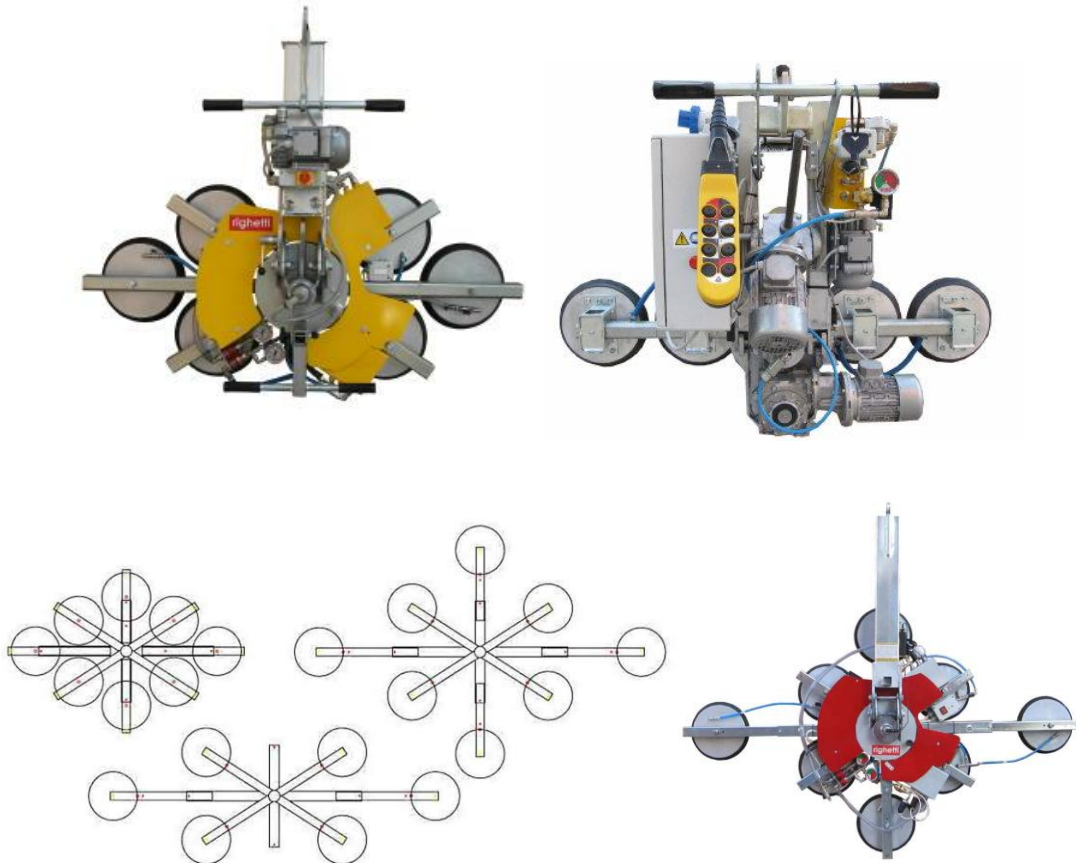
In between 2012 to 2014, we have managed to sell almost 600 hoists of CLASSIC. With the sales of cradles comes their accessory, which includes: Castor Wheels, Rubber Wheels, Platforms, Hanging systems, Power Cables and of course the Steel Wire Ropes plus all spare Parts.

Compared to our competitors, we have done the best. We were able to offer a good quality product (CLASSIC) at a competitive price and with excellent after sales service maintaining.



5.1.3. Glass Handling & Lifting Equipment's

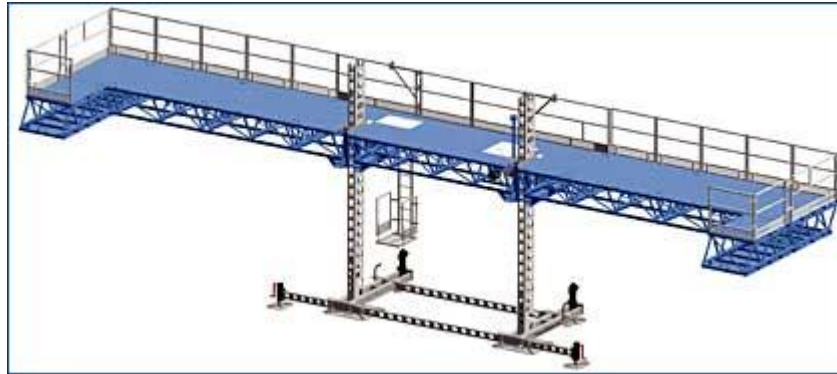
By having good relation with many of the glazing contractors in the region, we sensed the demand for glass lifting equipment's. Accordingly, we have European Glass Lifter supply (RIGHTI - ITALY), the regional markets with their comprehensive range of products.



The year 2012 was the start of marketing the products. Sales, however, only started to take momentum by the end of the year and continued to show good potential. By now ABC is in the region with local stock for Glass Suckers of various capacities and sizes.

5.1.4. Access Equipments

We offer an extensive range of access equipment Mast Climber Systems, that are designed and developed to suit the requirements of construction industry.



Based on exhaustive research which includes the following:

- Easy To Use.
- Low Maintenance.
- Durable.
- Long Service Life.

5.1.5. INDUSTRIAL CNC MACHINERY

We offer an extensive range of NC & CNC Machines that are designed and developed to suit the requirements of the industry. Our product range can be broadly categorized as Steel Machinery and Sign Works.

We are a joint venture company with international machinery manufacturer companies and our products as follow.

5.1.5.1. CNC ROUTER MACHINE

ABC offering a very high quality with high precision & Rigidity a CNC router machines Italian Brand (ACCUTECH), this machine can work on many types of materials like Wood, Aluminum Composite Panels, Aluminum, Copper, Brass, & Acrylic.

The machine capable to make a 2D & 3D works engraving & Cutting.

We have a wide range of CNC Routers standard and custom made as per customer request.



5.1.5.2. CNC PLASMA CUTTING MACHINE

We are offering a very accurate and high speed with high definition of a CNC Plasma Cutting Machines; these machines are Turkish Brand (Inanlar) and its useful to cut a small and very big thickness of Metals.



5.1.5.3. CNC LASER CUTTING MACHINE

Our Fiber Laser Cutting machine, it's one of the leading laser machine in the local and international markets, our machine is Poland Brand (CUTTECH) and its capable to cut up to 25mm Thk Steel material with high speed and accuracy.



5.1.5.4. NC & CNC HYDRULIC PRESSBRAKE MACHINES

Our Press Brake machines either controlled by NC or CNC Controllers and its capable to bend a very high thickness steel & St. Steel materials with very long sheet length up to 16000mm long, our machines brand are Turkish Brand (INANLAR).



5.1.5.5. NC & CNC GUILLITON SHEAR MACHINES

Our Shear machines also either controlled by NC or CNC Controllers and its capable to cut a very high thickness steel & St. Steel materials with very long sheet length up to 16000mm long, our machines brand are Turkish Brand (INANLAR).



5.2. RENTAL

ABC have started rental of cradles since its start. We currently operate around 100 cradles for rental.

The high-rise construction in the area has created a demand for endless wire winches, which exactly our specialty of winches that are used normally to operate the cradles. Accordingly, we have also added to the rental fleet, lifting hoists and winches with endless wire winch.

5.3. SERVICES

The services we provide to our customers are related to the products we sell and hire. They can be summarized in:

- Onsite installation and shifting of cradles, BMU Systems, Machines.
- Onsite maintenance for cradles, winches, BMU & Machines.
- Refurbishment of cradles and winches in our workshop.
- Supply, Installation, training and commissioning of all products.
- Giving special solutions to our customers if needed.

Our customer's satisfaction is our mean goal, and all will be done by excellent design, manufacturing, supply, installation, Training, & Commissioning services.

6. OUR PRODUCTS AND SERVICES ARE READY FOR MARKET

Our products and services are available for sale now. We have all the catalogues and technical literature about all our products and services; in our stock all most of the products are available.

We do presently have the skills and technical capability to provide the service for our customers and to ensure the safety and the quality of our products.

7. THE IMPORTANCE OF QUALITY PRODUCTS

We are offering our clients the option of a quality product at a reasonable price and a reasonable quality product at an aggressive price. Yet we continue developing the quality awareness of our clients by introducing more quality products at a reasonable price and offering them differed payment to help them in financing the quality product. You cannot sell a product you do not believe in, and as said, "The only thing standing between you and the customers' scorn is the integrity of your product." We have learned to fight the cost, quality, and service trade-off.

8. COMPLETED PROJECTS

8.1 PROJECTS IN GCC

➤ Jeddah / Saudi Arabia

- Project : International Islamic Bank
- Building Height : 30m
- Machine Model : AST50 12m jib Facade Cleaning System with 200m Twin Track Rail



➤ **Doha / QATAR**

- **Project** : Viva Bahriya 02
- **Building Height** : 120m
- **Machine** : AST70 Model 2 Façade Cleaning Machines with 12m Jib and 40m Double Rail



➤ **Doha / QATAR**

- **Project** : Proposed Office Building / Qatar
- **Building Height** : 70m
- **Machines** : AST 50 Model Façade Cleaning Machine with 12m Jib
- : AST 45 Model Façade Cleaning Machine with 5m Jib and 150m Rail installation



➤ **Doha / QATAR**

- **Project** : Viva Bahriya 09
- **Building Height** : 120m
- **Machine** : AST70 Model 2 Facade Cleaning Machines with 12m Jiband 40m Double Rail

➤ **Manama / BAHRAIN**

- **Project** : Busaiteen Links
- **Building Height** : 90m
- **Machine** : AST25 Davit System Facade Cleaning System

➤ **Doha / QATAR**

- **Project** : Salwa Hotel
- **Building Height** : 70m
- **Machine** : AST45 Model Facade Cleaning System

➤ **Manama / BAHRAIN**

- **Project** : Kanoo Tower
- **Building Height** : 155m
- **Machine** : AST70 Model Facade Cleaning Machine with 31m Jib

➤ **Manama / BAHRAIN**

- **Project** : Fakhro Tower
- **Building Height** : 100m
- **Machine** : AST45 Model Facade Cleaning System

➤ **Manama / BAHRAIN**

- **Project** : GCT Juffair
- **Building Height** : 120m
- **Machine** : AST50 Model Facade Cleaning System

➤ **Manama / BAHRAIN**

- **Project** : SLRB
- **Building Height** : 100m
- **Machine** : AST35 Climbing Monorail Facade Cleaning System

8.2 PROJECTS WORLDWIDE

➤ Kirsehir / TURKEY

- Project : Makisos Thermal Hotel
- Building Height : 70m
- Machine Model : AST70 Telescopic System 30m Jib



➤ Istanbul / TURKEY

- Project : Yolbulan Metal AŞ Headquarter
- Building Height : 27m
- Machine Model : AST45 Façade Cleaning System with 50m Guide Rail



➤ Eskisehir Road / Ankara

- **Project** : Ministry of Agriculture and Regional Affairs
- **Building Height** : 75m
- **Machine Model** : AST50 Two Façade Cleaning Systems with 12m Jib.
- **Special Rotating Platform and 184m Twin Track Rail**



➤ Ankara / TURKEY

- **Company** : Police Foundation / Ankara / Turkey
- **Building Height** : 30m
- **Machine** : AST15 Manual Façade Cleaning System
- **Counter Weight Manual System for Façade Cleaning with AST05 One Person Cradle.**



➤ Antalya / TURKEY

- Company : Dedeman Hotel
- Building Height : 45m
- Machine : AST20 Anchorage Arms with Custom Designed Powered Cradle.



➤ Erzurum / TURKEY

- Project : Polat Hotel
- Building Height : 25m
- Machine : AST30 Monorail Façade Cleaning System 40m Monorail with AST05 One Person Cradle



➤ **Ankara / TURKEY**

- **Project** : Efes Pilsen Factory
- **Building Height** : 25m
- **Machine** : Special Bunker Maintenance Machine



➤ **Istanbul / TURKEY**

- **Company** : Perla Vista Plaza
- **Building Height** : 55m
- **Machine** : AST15 Manual Façade Cleaning System
- **Counter Weight Manual System for Façade Cleaning System with AS750 Cradle**



➤ **Artvin / TURKEY**

- **Proje** : Deriner Dam
- **Building Height** : 100m
- **Machine** : Counter Weight System Working Platform



➤ **Bursa / TURKEY**

- **Company** : Tuze Group Company
- **Building Height** : 45m
- **Machine** : AST30 Monorail Façade Cleaning System 130m Monorail with AST10 Two Person Cradle



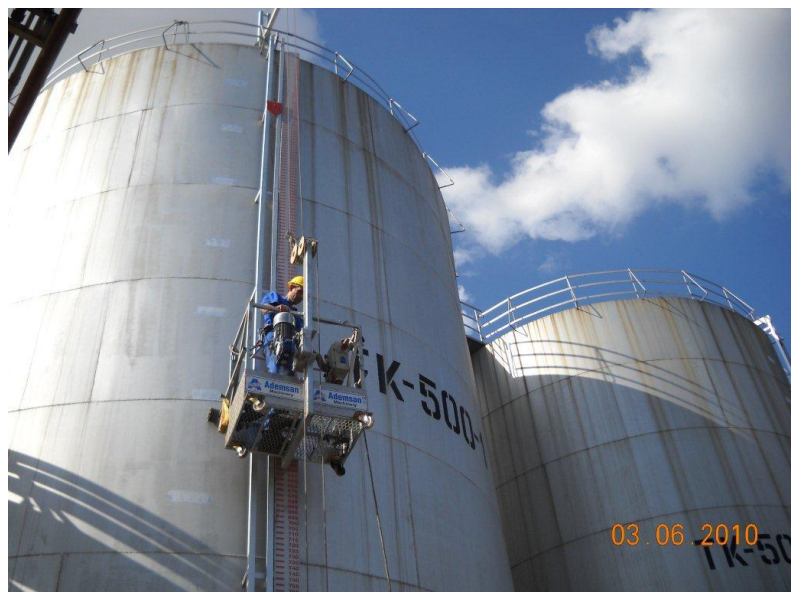
➤ **Istanbul / TURKEY**

- **Project** : Social Security Institution Building
- **Building Height** : 40m
- **Machine** : AST30 Monorail Façade Cleaning System



➤ **Izmir / TURKEY**

- **Project** : Dalan Soap Chemical Industries A.Ş.
- **Building Height** : 20m
- **Machine** : Bunker Cleaning Platform



➤ **Istanbul / TURKEY**

- **Project** : Takas Bank A.S Headquarter
- **Building Height** : 25m
- **Machine** : AST15 Manual Façade Cleaning System



➤ **Istanbul / TURKEY**

- **Project** : Odak Construction A.S Headquarter
- **Building Height** : 65m
- **Machine** : Manual Cleaning Platform



➤ **Ankara / TURKEY**

- **Project** : TRT (National Turkish Television) Headquarters
- **Building Height** : 40m
- **Machine** : AST30 Façade Cleaning System 32m Monorail with AST10 Two Person Cradle



➤ **Kocaeli / TURKEY**

- **Project** : VGB Shipyard Management Building
- **Building Height** : 15m
- **Machine** : AST15 Manual Façade Cleaning Machine



➤ ISTANBUL / TURKEY

- Project : Zone Tower
- Building Height : 70m
- Machine : AST30 Façade Cleaning System
- 225m monorail with AST10 Two Person Cradle



➤ Ankara / TURKEY

- Project : Prime Ministry Social Security Management Building
- Building Height : 20m
- Machine : AST15 Manual Façade Cleaning System



➤ Istanbul / TURKEY

- Project : Story Residence 2
- Building Height : 40m
- Machine : AST30 Façade Cleaning System 60m monorail with AST10 Two Person Cradle



➤ Ankara / TURKEY

- Project : General Directorate for Pharmaceuticals and Pharmacy
- Building Height : 60m
- Machine : AST30 Façade Cleaning System 116m monorail with AST10 Two Person Cradle



➤ **Ankara / TURKEY**

- **Project** : Akgul Dogukan Business Tower
- **Building Height** : 70m
- **Machine** : AST30 Façade Cleaning System
- **110m monorail with AST10 Two Person Cradle**



➤ **Izmir / TURKEY**

- **Project** : Bornova Tax Administration Building
- **Building Height** : 27m
- **Machine** : AST30 Façade Cleaning System 120m monorail with Two Person Cradle



➤ **Istanbul / TURKEY**

- **Company** : Yuceler Co.
- **Machine** : AST30 Façade Cleaning System 150m Monorail with AST10 Two Person Cradle



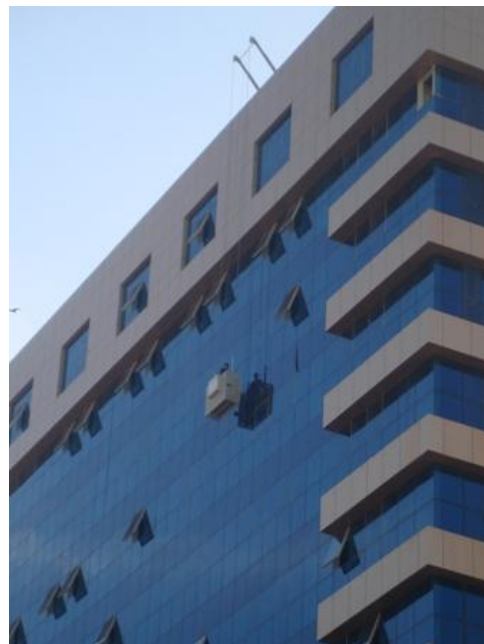
➤ **Istanbul / TURKEY**

- **Company** : Orkun Group INC.
- **Machine** : AST30 Façade Cleaning System 60m Monorail with AST05 One Person Cradle



➤ **Khartoum / Sudan**

- **Company** : **TURKISH EMIRATES for CONSTRUCTION INC**
- **Machine** : **AST40 Light Type Double Jib Façade Cleaning Machine**
- : **AST40 Double Rail Tracking Façade Cleaning System with 380m Double Rail**



➤ **Arbil / IRAQ**

- **Project** : Van Royal Hotel
- **Building Height** : 40m
- **Machine** : Monorail Façade Cleaning Machine with 53m monorail



➤ **Nicosia / TRNC**

- **Project** : Golden Tulip Hotel
- **Building Height** : 40m
- **Machine** : 1 Monorail and 1 Low Rise Davit Façade Cleaning Machine with 32m monorail



➤ **Baku / AZERBAIJAN**

- **Project** : Aga Group
- **Machine** : AST50 Series Heavy Type BMU
- : AST50 with 8m Jib with 120m Double Rail



➤ **Kyrenia / TRNC**

- **Project** : Bumerang Hotel
- **Building Height** : 20m
- **Machine** : Special Design Bridge for Façade Cleaning



➤ **Dushanbe /Tajikistan**

- **Project** : Serena Hotel
- **Building Height** : 40m
- **Machine** : 2 Monorail System Façade Cleaning Machines
- : Special Davit Façade Cleaning System



➤ Ashgabat / TURKMENISTAN

- **Project** : Cardak Hotel
- **Building Height** : 30m
- **Machine** : AST20 Anchorage Arms with AST10 Self Powered Cradle.



➤ Arbil / IRAQ

- **Project** : Arbil Royal Mall
- **Building Height** : 40m
- **Machine** : Counter Weight Manual System Façade Cleaning Machine



➤ **NICOSIA / TRNC**

- **Project** : Grand Nicosia Hotel
- **Machine** : AST30 Monorail Façade Cleaning Machine
- **32m Monorail with AST10 Self Powered Cradle**

➤ **Amman / JORDAN**

- **Project** : Dammac Heights
- **Building Height** : 130m
- **Machine** : AST70 Model Facade Cleaning Machine with 19m Jib

➤ **Cairo / EGYPT**

- **Project** : City Investments
- **Building Height** : 60m
- **Machine** : AST30 Facade Cleaning Machines with 110m monorail

➤ **Kocaeli/ TURKEY**

- **Project** : Solventas Technichal Storage
- **Building Height** : 15m
- **Machine** : Counter Weight System Façade Cleaning Machine

➤ **Kayseri / TURKEY**

- **Project** : Imtas Plaza
- **Building Height** : 60m
- **Machine** : Anchorage Shot Hoist System Façade Cleaning Machine

➤ **Alexandria / EGYPT**

- **Project** : Hauteur Co
- **Building Height** : 40m
- **Machine** : AST70 Façade Cleaning System with 19m Telescopic Boom

➤ **Alexandria / EGYPT**

- **Project** : Hauteur Co
- **Building Height** : 60m
- **Machine** : 2 Counter Weight System Manual Façade Cleaning Machines

➤ **Kocaeli / TURKEY**

- **Project** : Yahya Kaptan Student Dormitory
- **Building Height** : 15m
- **Machine** : AST30 Monorail System Façade Cleaning Machine

➤ **Istanbul / TURKEY**

- **Project** : Arpas Romorkajve Pilotaj A.S Headquarter
- **Building Height** : 25m
- **Machine** : AST30 Monorail System Façade Cleaning Machine with 70m monorail

➤ **Istanbul / TURKEY**

- **Project** : KN Muhendislik Headquarter
- **Building Height** : 15m
- **Machine** : AST30 Monorail System Façade Cleaning Machine with 30m monorail

➤ **Ankara / TURKEY**

- **Project** : ASKi (National Water Supply) Headquarter
- **Building Height** : 30m
- **Machine** : AST30 Monorail System Façade Cleaning Machine with 105m monorail